

Re-cut guide

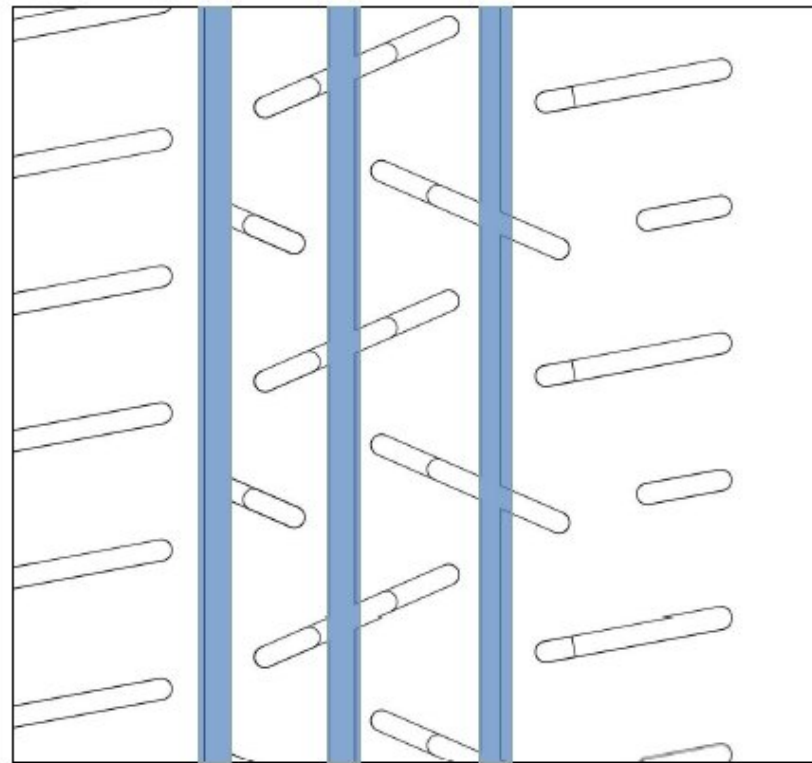


Figure1

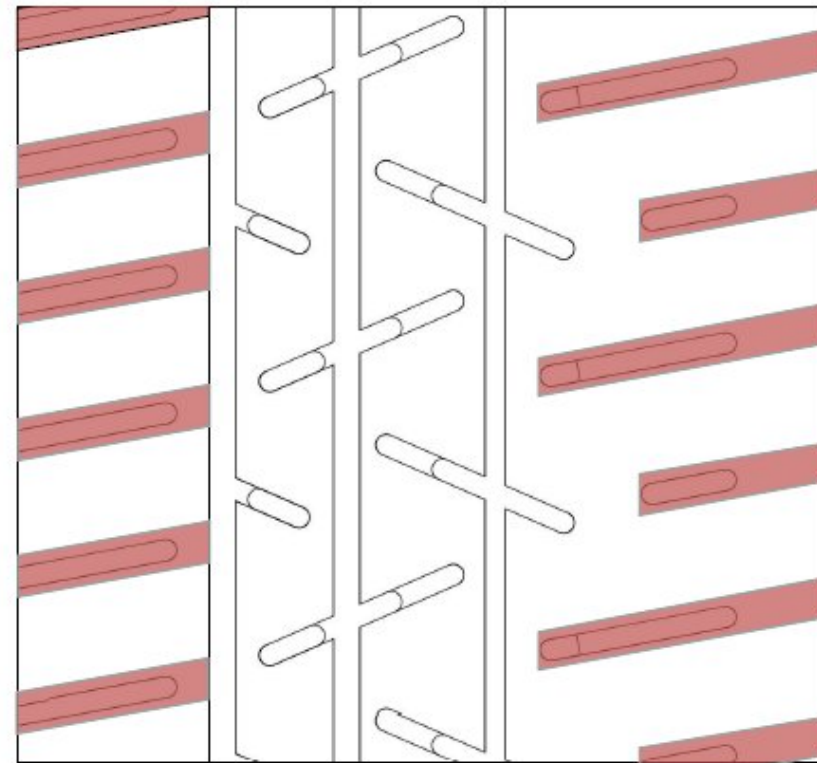


Figure2

To improve lateral grip and hydroplaning, refer to figure 1

To improve traction, refer to figure 2

Depth : 5.0mm, Width : 9.0mm

※ Basically FIA homologated new tarmac pattern(Z205) for dry & wet is not allowed to re-cut to improve tire performance.

This guide is the only reference when re-cut is allowed in your countries.