



## Transilvania Rally 2019

# SUPPLEMENTARY REGULATIONS

2019 TER Tour European Rally

2019 Dunlop National Rally Championship

2019 Dunlop National Rally Championship for Historical Vehicles

2019 Dunlop National Rally 2 Championship

All parts of this regulation written in blue are applicable only for national classes CNRD, CNRVID and CNR2D and are subject for approval by the FRAS only.



---

## CONTENTS

<b>1. INTRODUCTION</b>	<b>3</b>
<b>2. ORGANISATION</b>	<b>4</b>
<b>3. SCHEDULE</b>	<b>7</b>
<b>4. ENTRIES</b>	<b>12</b>
<b>5. INSURANCE</b>	<b>19</b>
<b>6. ADVERTISING AND IDENTIFICATION</b>	<b>19</b>
<b>7. TYRES</b>	<b>20</b>
<b>8. FUEL AND REFUELING</b>	<b>21</b>
<b>9. RECONNAISSANCE</b>	<b>21</b>
<b>10. ADMINISTRATIVE CHECKS</b>	<b>23</b>
<b>11. SCRUTINEERING, SALES AND MARKING</b>	<b>24</b>
<b>12. OTHER PROCEDURES</b>	<b>25</b>
<b>13. IDENTIFICATION OF OFFICIALS</b>	<b>32</b>
<b>14. PRIZES</b>	<b>32</b>
<b>15. FINAL SCRUTINEERING</b>	<b>33</b>
<b>16. PROTESTS AND APPEALS</b>	<b>34</b>
<i>Appendix I - ITINERARY</i>	<b>35</b>
<i>Appendix II - RECONNAISSANCE SCHEDULE</i>	<b>37</b>
<i>Appendix III - COMPETITORS RELATION OFFICER</i>	<b>38</b>
<i>Appendix IV - COMPETITION NUMBERS AND ADVERTISING</i>	<b>39</b>
<i>Appendix V - SHAKEDOWN MAP</i>	<b>40</b>
<i>Appendix VI - SSS CLUJ-ARENA MAP</i>	<b>41</b>
<i>Appendix VII - OVERALL MAP</i>	<b>42</b>
<i>Appendix VIII - SHAKEDOWN STATEMENT</i>	<b>43</b>



## 1. INTRODUCTION

### 1.1 General

This rally will run in accordance with:

- The FIA International Sporting Code (ISC) and its appendices;
- The FIA Regional Rally Sporting Regulations (FIA-RRSR) 2019;
- [The Romanian National Sporting Regulations 2019 \(FRAS\)](#);
- These Supplementary Regulations;
- The Romanian Traffic Regulations.

Additional information will be published in the **Rally Guide**.

The 2019 FIA Regional Rally Sporting Regulations can be found at [www.fia.com](http://www.fia.com).

The 2019 TER Regulations can be found at [www.terseries.com](http://www.terseries.com).

[The 2019 FRAS Regulations can be found at www.fras.ro](#).

Any modifications, amendments and / or changes to these Supplementary Regulations will be announced only by numbered and dated Bulletins (issued by the Organizer, the Stewards or the Clerk of the Course for changes or amendments concerning the itinerary or the final posting time).

**Place and date of the rally:** Cluj, 27 - 28 September 2019.

### 1.2 Road surface

TER / CNRD / CNRVID: Tarmac 100%;

CNR2D: Tarmac 100%.

### 1.3 Distances

TER / CNRD / CNRVID:

Total length: 493,11 km;

Number of Special Stages: 10 (6 different include SSS Cluj-Arena);

Total length of Special Stages: 147,39 km;

Percent of Special Stages: 29,89%;

Number of Super Special Stages: 1;

Number of sections: 5;

Number of legs: 2.

**CNR2D:**

Total length: 263,56 km

Number of Special Stages: 5 (5 different include SSS Cluj-Arena);



Total length of Special Stages: 78,12 km;  
Percent of Special Stages: 29,64%;  
Number of Super Special Stages: 1;  
Number of sections: 3;  
Number of legs: 2.

**1.4 Rally coefficient:**  
**1.2 for CNRD / CNRVID**  
**1 for CNR2D**

## 2. ORGANISATION

### 2.1 Titles of the rally:

- FIA ERT 2020 candidate stage;
- 2019 TER - Tour European Rally 2019 - Stage four;
- 2019 FRAS Dunlop National Rally Championship - Stage seven;
- 2019 FRAS Dunlop National Rally for Historical Vehicle - Stage seven;
- 2019 FRAS Dunlop National Rally 2 Championship - Stage seven.

**2.2 Organization License:**  
**FRAS: 37 / 20.08.2019**

**2.3 VISA numbers:**  
**ACR: To be announced**  
**FRAS: To be announced**

### 2.4 Organizer's name / Permanent address

#### Motorhome Napoca Rally Team

Adress: Uliului Street No 43C, Cluj-Napoca, Cluj, Romania  
Phone: +40 726 188 253  
Email: [contact@napocarallyacademy.ro](mailto:contact@napocarallyacademy.ro)  
Web: [www.transilvaniarally.ro](http://www.transilvaniarally.ro)  
Entry: [entry@napocarallyacademy.ro](mailto:entry@napocarallyacademy.ro)

### 2.5 Organisation Committee

Emil BOC	Mayor of Cluj-Napoca
Ștefan TARCEA	Deputy Mayor of Cluj-Napoca
Alin TIȘE	President of Cluj County Council
Horia SULEA	Mayor of Florești
Ioan MORAR	Mayor of Râșca



Ioan CONDOR	Mayor of Mănăstireni
Viorel GHIC	Mayor of Mărișel
Petru UNGUR	Mayor of Mărgău
Viorel MATIȘ	Mayor of Beliș
Police Chief Commissioner Mircea Ion RUS	Cluj Country Police Inspectorate
(i) Police Commissioner Dan CRIȘAN	Cluj Country Road Police
(i) Police Inspector Laurențiu MAIER	Cluj-Napoca Road Police
Colonel Cristian MAXIM	Cluj-Napoca Inspectorate of Country Police
Colonel Sebastian Florin CLIȚAN	Cluj-Napoca Mobile Group of Country Police
Lt. Col. Ion MOLDOVAN	Cluj Inspectorate for Emergency Situations
Dr. Cristian URSU	SMURD Cluj
Marco TEMPESTINI	Napoca Rally Academy Manager

## 2.6 FIA Delegates:

FIA Observer:	To be announced
ASN Delegate:	To be announced

## 2.7 FRAS Delegates:

FRAS Observer:	Daniel UNGUR	ROU - CJ 63
FRAS Safety delegate:	Cătălin NICOLAESCU	ROU - AG 22
CCA Observer:	Ioan BADIU	ROU - SB 17

## 2.8 Stewards of the meeting:

Chairman:	To be announced
Steward:	To be announced
Steward:	To be announced
Secretary:	To be announced

## 2.9 Officials:

Clerk of the Course:	To be announced	
Deputy Clerk of the Course:	To be announced	
TER Promoter / Organizer:	Luca GRILLI	IT
Organizing Director:	Bela STOICA	ROU - BV
Rally Manager:	Cristian ANDREI	ROU - BV
Chief Secretary:	To be announced	
Chief Scrutineering:	To be announced	
Safety Chief Officer:	To be announced	
Route Chief Officer:	To be announced	
Sweeper Chief Officer:	To be announced	



---

Head of communications:	To be announced	
Chief Timekeeper:	To be announced	
Deputy Timekeeper:	To be announced	
Results Processing Officer:	To be announced	
Press Officer:	Marius TUHUȚ	ROU - CJ
Chief Medical Officer:	Dr. Cristian URSU	ROU - CJ
Competitors Relations Officer:	Mihai LĂCĂTUȘ	ROU - CJ

## 2.10 Rally Headquarter Cluj-Arena, Cluj-Napoca

Address: Stadionului Alley No. 2, Cluj-Napoca, Cluj, Romania

Phone: +40 730 633 904 - Ioana MUCUNDORFEAN

GPS: 46° 46.105'N, 23° 34.287'E

## 2.11 Official notice board

- Rally Headquarter;
- On-line at [www.transilvaniarally.ro](http://www.transilvaniarally.ro).

## 2.12 Parc Ferme

### Cluj-Arena, Cluj-Napoca

Inside the Park Ferme, it is mandatory to install an impermeable hydrocarbon resistant foil under every car, on a surface of minimum 1,5 x 2 m, in order to prevent pollution from engine leaks. Any offense will be penalized with a fine of 200 €, paid to the organizer until Saturday, 28 September 2019, at 20:00.

**The final Park Ferme must be released no later than Saturday, 28 September 2019 at 00:00.**

## 2.13 Service Park

### Sports Hall, Cluj-Napoca

Address: Independenței Street

GPS: 46° 45.984'N, 23° 33.902'E

## 2.14 Regroup

### Pandurilor Street, Cluj-Napoca

GPS: 46° 45.911'N, 23° 33.804'E

## 2.15 Refuel

### • Sports Hall, Cluj-Napoca (at the exit from the Service Park)

GPS: 46° 46.009'N, 23° 33.970'E



• **Remote refuel: Beliș, Cluj Country**

GPS: 46° 40.858'N, 23° 1.787'E

It's allowed refuel in gas stations indicates in Road-Book. **NAT 11 and NAT 12 Classes can feed in gas stations with own fuel.**

**2.16 Media Center**

**Cluj-Arena, Cluj-Napoca**

Adress: Stadionului Alley No. 2, Cluj-Napoca, Cluj, Romania

Phone: +40 745 102 822 - Marius TUHUT

GPS: 46° 46.105'N, 23° 34.287'E

**2.17 Auxiliary Park:**

**Sun, Cluj-Napoca**

Adress: 1 Decembrie 1918 Boulevard, Cluj-Napoca, Cluj, Romania

GPS: 46° 45.786'N, 23° 32.746'E

**3. SCHEDULE**

**3.1 Schedule before the rally week**

**Wednesday, 28 August 2019**

Activity	Schedule	Location
Publication of Supplementary Regulations	20:00	Website www.transilvaniarally.ro
Publication of Entry Forms		
Opening date for entries		
Publication of Media Accreditation Forms		
Publication of Rally Guide 1		

**Friday, 20 September 2019**

Activity	Schedule	Location
Closing date for entries	20:00	Website www.transilvaniarally.ro
Publication of Entry List	22:00	
Publication of Rally Guide 2		
Publication the list of Accredited Media Representatives		



### 3.2 Schedule during the rally week

Tuesday, 24 September 2019		
Activity	Schedule	Location
<i>Private tests (Details to organizer)</i>	08:00 - 19:00	Răchițele - Doda Pili Cluj Country
Rally Headquarter opening hours	18:00 - 22:00	Cluj-Arena, Cluj-Napoca
Registration for reconnaissance and distribution of materials	18:00 - 22:00	Rally HQ, Cluj-Arena
Distribution of GPS devices for the reconnaissance car and for race car	18:00 - 22:00	Rally HQ, Cluj-Arena
Wednesday, 25 September 2019		
Activity	Schedule	Location
Rally Headquarter opening hours	08:00 - 20:00	Cluj-Arena, Cluj-Napoca
Registration for reconnaissance and distribution of materials	08:00 - 20:00	Rally HQ, Cluj-Arena
Distribution of GPS devices for the reconnaissance car and for race car	08:00 - 20:00	Rally HQ, Cluj-Arena
Optional administrative checks for TER, CNRD and CNRVID *	15:00 - 20:00	Rally HQ, Cluj-Arena
Reconnaissance for TER, CNRD, CNRVID at SS Căpușu Mare	09:00 - 14:00	According to schedule of Appendix II
Reconnaissance for TER, CNRD, CNRVID at SS Beliș and SS Mărișel	09:00 - 19:00	According to schedule of Appendix II
Reconnaissance for TER, CNRD, CNRVID at SS Dângău	14:00 - 19:00	According to schedule of Appendix II
Service Park opening hours - <b>Official:</b> <i>Alexandru Cristea - Phone: +40 735 852 723</i>	09:00 - 20:00	Sports Hall, Cluj-Napoca
Welcome cocktail	20:00	Chios Social Lounge





**Tuesday, 24 September 2019**

<b>Activity</b>	<b>Schedule</b>	<b>Location</b>
Rally Headquarter opening hours	08:00 - 20:00	Cluj-Arena, Cluj-Napoca
Media Center / Credentials opening hours	08:00 - 20:00	Cluj-Arena, Cluj-Napoca
Registration for reconnaissance and distribution of materials	08:00 - 17:00	Rally HQ, Cluj-Arena
Distribution of GPS devices for the reconnaissance car and for race car	08:00 - 17:00	Rally HQ, Cluj-Arena
Administrative checks for TER, CNRD, CNRVID (optional for CNR2D)	08:00 - 17:00	Comandament, Cluj-Arena
Reconnaissance for TER, CNRD, CNRVID (optional for CNR2D) at SS Căpușu Mare	08:00 - 13:00	According to schedule of Appendix II
Reconnaissance for TER, CNRD, CNRVID (optional for CNR2D) at SS Beliș and SS Mărișel	08:00 - 18:00	According to schedule of Appendix II
Reconnaissance for TER, CNRD, CNRVID (optional for CNR2D) at SS Florești	09:00 - 12:00	According to schedule of Appendix II
Reconnaissance for TER, CNRD, CNRVID (optional for CNR2D) at SS Dângău	13:00 - 18:00	According to schedule of Appendix II
Service Park opening hours - <b>Official:</b> <i>Alexandru Cristea - Phone: +40 735 852 723</i>	08:00 - 22:00	Sports Hall, Cluj-Napoca
Scrutineering, sealing and marking (According schedule for TER, CNRD, CNRVID, optional for CNR2D)	14:00 - 18:30	Service Park, Sports Hall, Cluj-Napoca
Initial press conference	17:45	Cluj-Arena, Cluj-Napoca
Competitors Briefing	18:30 - 19:00	Cluj-Arena, Cluj-Napoca
Prepare for City Demo	19:00	Service Park, Sports Hall, Cluj-Napoca
Meet the crews and autograph session	19:30 - 20:30	Cluj-Arena Esplanade, Cluj-Napoca
Gastronomic event		
Official photo		
Ceremonial Start include presentation of the drivers	20:30	Cluj-Arena Esplanade, Cluj-Napoca



Reconnaissance for TER, CNRD, CNRVID, CNR2D at SSS Cluj-Arena, with reconnaissance car	22:30 - 00:00	According to schedule of Appendix II
--	---------------	--------------------------------------

*\* Administrative checks may be carried out at the registration for reconnaissance and distribution materials from Wednesday, 25 September at 15:00, but no later than Thursday, 26 September, at 17:00.*

### Friday, 27 September 2019

Activity	Schedule	Location
Rally Headquarter opening hours	08:00 - 23:00	Cluj-Arena, Cluj-Napoca
Media Center / Credentials opening hours	08:00 - 22:00	Cluj-Arena, Cluj-Napoca
Service Park opening hours - <b>Official:</b> <i>Alexandru Cristea - Phone: +40 735 852 723</i>	08:00 - 22:00	Sports Hall, Cluj-Napoca
Administrative re-checks for TER, CNRD, CNRVID	08:00 - 09:00	Rally HQ, Cluj-Arena
Re-scrutineering, sealing and marking for TER, CNRD, CNRVID	08:00 - 09:00	Service Park, Sports Hall, Cluj-Napoca
Registration for reconnaissance and distribution of materials for CNR2D	08:00 - 09:00	Rally HQ, Cluj-Arena
Distribution of GPS devices for the reconnaissance car and for race car for CNR2D	08:00 - 09:00	Rally HQ, Cluj-Arena
Administrative checks for CNR2D	08:00 - 09:00	Rally HQ, Cluj-Arena
Scrutineering for CNR2D	08:30 - 09:30	Service Park, Sports Hall, Cluj-Napoca
Optional reconnaissance only for CNR2D at SS Căpușu Mare with GPS monitoring.	09:00 - 11:30	According to schedule of Appendix II
Optional reconnaissance only for CNR2D at SS Beliș with GPS monitoring.	09:00 - 14:00	According to schedule of Appendix II
Optional reconnaissance only for CNR2D at SS Dângău with GPS monitoring.	11:30 - 14:00	According to schedule of Appendix II
Shakedown for TER; CNRD - Classes RC2, RC2N, RC3, RGT, RC4 and NAT11	09:00 - 13:30	Florești
Shakedown for CNRD - Classes RC5, NAT12; CNRVID and CNR2D	11:15 - 13:30	Florești



First Stewards Meeting	14:00	Rally HQ, Cluj-Arena
Publication of LEG 1 start list	14:30	Rally HQ, Cluj-Arena
Rally start - the first car	15:00	Service Park, Sports Hall, Cluj-Napoca
LEG 1 Finish - the first car	21:32	Park Ferme, Cluj-Arena, Cluj-Napoca
Publication of LEG 1 provisional classification / Publication of LEG 2 start list	23:00	Parc Închis, Cluj-Arena, Cluj-Napoca

**Saturday, 28 September 2019**

<b>Activity</b>	<b>Schedule</b>	<b>Location</b>
Rally Headquarter opening hours	07:30 - 20:00	Cluj-Arena, Cluj-Napoca
Media Center opening hours	07:30 - 20:00	Cluj-Arena, Cluj-Napoca
Service Park opening hours - <b>Official:</b> <i>Alexandru Cristea - Phone: +40 735 852 723</i>	07:00 - 20:00	Sports Hall, Cluj-Napoca
LEG 2 start - the first car	07:30	Park Ferme, Cluj-Arena, Cluj-Napoca
Rally finish - the first car	16:24	Park Ferme, Cluj-Arena, Cluj-Napoca
Award ceremony for the first 3 crews	Aproximativ 16:30	Podium, Cluj-Arena Esplanade, Cluj-Napoca
Final scrutineering	18:00	RMB Inter Auto Ford
Second Stewards Meeting	18:30	Rally HQ, Cluj-Arena
Publication of provisional classification	19:00	Rally HQ / Website <a href="http://www.transilvaniarally.ro">www.transilvaniarally.ro</a>
Publication of final official classification	19:30	Rally HQ / Website <a href="http://www.transilvaniarally.ro">www.transilvaniarally.ro</a>
Prize giving ceremony	19:30	Podium, Cluj-Arena Esplanade, Cluj-Napoca
Final press conference	20:00	Podium, Cluj-Arena Esplanade, Cluj-Napoca
After rally party	22:00	Chios Social Lounge



## 4. ENTRIES

**4.1 Closing date for entries:** Friday, 20 September 2019, at 20:00.

### 4.2 Entry procedure:

Competitors wishing to participate at Transilvania Rally 2019 must complete the entry form available at [www.transilvaniarally.ro](http://www.transilvaniarally.ro) and send it duly completed, together with the billing data (individual or company) at the mail [entry@napocarallyacademy.ro](mailto:entry@napocarallyacademy.ro). The original entry form duly signed reach the organizer five days following the closing date (FIA - RRSR Art. 21.2).

The payment of the entry fees will only be accepted by bank transfer. For foreign competitors, drivers and co-drivers authorization must be given by their ASN and original has to be presented at the Administrative Checks. In case the competitor is not one of the drivers, the entry form must be accompanied by a copy of the valid competitors license.

For entries in national classes, a separate entry form will be used. [Competitors participating in both TER and FRAS CNRD will pay only the FRAS CNRD entry fee, but they will fill-in both entry forms.](#)

**COMPETITORS WHO WISH TO TAKE PART IN TER MUST RESPECT THE TER REGULATIONS** ([click here](#)).

**4.3 Maximum number of entries:** 120

In case of exceeding the maximum number of entries, the teams who sent the latest entries and paid the entry fee will be put on a waiting list and not on the official entry list. The Organizer reserves the sole right to decide which entries among the non-priority drivers will be accepted.



#### 4.4 Eligible cars

FIA Clases		
Class	Group	
RC2	Group R5 (VR5)	Group R5 cars conforming to the 2019 Appendix J, Art. 261.
	<b>S2000-Rally:</b> 1.6T engine with a 28mm restrictor	Super 2000-Rally cars (conforming to the 2013 Appendix J, Art. 255A) fitted with a restrictor complying with Art. 255A-5.1.1-b except for the following points: a) the maximum internal diameter of the restrictor is 28 mm, b) The external diameter of the restrictor at its narrowest point must be less than 34 mm. The diameter must be maintained over a distance of 5 mm to each side of the narrowest point. - The diameter of the turbo compressor restrictor may be revised by the FIA at any time without notice.
	<b>S2000-Rally:</b> 2.0 Atmospheric	Super 2000 cars (conforming to the 2013 Appendix J, Article 254A)
	Group R4 (VR4K)	Cars fitted with R4 Kit conforming to the 2019 Appendix, Art. 260E.
	Group NR4 over 2000cc (current N4)	Group N cars conforming to the 2019 Appendix J, Art.254.
<b>RGT</b>	<b>RGT</b>	Group RGT cars conforming to the 2019 Appendix J, Art. 256.
RC3		<b>R3</b> (atmo / over 1600cc and up to 2000cc – VR3C and turbo over 1067cc and up to 1333cc – VR3C) - Group R cars conforming to the 2019 Appendix J, Art. 260.
		<b>R3</b> (turbo / up to 1620cc / nominal – VR3T) - Group R cars conforming to the 2019 Appendix J, Art. 260.
		<b>R3</b> (diesel / up to 2000cc / nominal – VR3D) - Group R cars conforming to the 2019 Appendix J, Art. 260D.
		<b>Grupa A</b> over 1600cc and up to 2000cc - Group A cars conforming to the 2019 Appendix J, Art. 255.
		<b>Super 1600</b> - Group A cars conforming to the 2019 Appendix J, Art. 255.
RC4	<b>RC4A</b>	<b>R2</b> (atmo over 1600cc and up to 2000cc – VR2C and turbo over 1067cc and up to 1333cc – VR2C) - Group R cars conforming to the 2019 Appendix J, Art. 260.



<b>RC4</b>	<b>RC4B</b>	<b>R2</b> (atmo over 1390cc and up to 1600cc – VR2B and turbo over 927cc and up to 1067cc – VR2B) – Group R cars conforming to the 2019 Appendix J, Art. 260 and Group R cars conforming to the 2018 Appendix J, Art. 260 (VR2B homologated before 31/12/2018).
		<b>Kit-car over 1600 cmc</b> - up to 1600cc Group A Kit Cars with a corrected cylinder capacity of less than 1600cc on condition that the homologation is accepted by the FIA as eligible for the Championship concerned.
		<b>Grupa A</b> - up to 1600cc Group A cars conforming to the 2019 Appendix J, Art. 255.
		<b>Grupa N</b> - over 1600cc and up to 2000cc Group N cars conforming to the 2019 Appendix J, Art.254.
<b>RC5</b>	<b>R1</b> (atmo up to 1600cc - VR1 and turbo up to 1333cc - VR1) Group R cars conforming to the 2018 Appendix J, Art. 260 (VR1A and VR1B homologated before 31/12/2018).	
	<b>R1</b> (atmo up to 1600cc – VR1A/VR1B and turbo up to 1067cc – VR1A/VR1B) - Group R cars conforming to the 2018 Appendix J, Art.260 (VR1A and VR1B homologated before 31/12/2018).	
	<b>Grupa N</b> - up to 1600cc - Group N cars conforming to the 2019 Appendix J, Art. 254.	

**TER classes are in accordance with Article 4 of the 2019 TER Regulation.**

<b>CNRD Classes</b>		
<b>Class</b>	<b>Group</b>	
<b>RC2</b>	<b>Group R5 (VR5)</b>	Group R5 cars conforming to the 2019 Appendix J, Art. 261.
	<b>S2000-Rally:</b> 1.6T engine with a 28mm restrictor	Super 2000-Rally fitted with a restrictor complying with Art. 255A - 5.1.1-b except for the following points: a) the max.internal diameter of the restrictor is 28mm.
	<b>S2000-Rally:</b> 2.0 Atmospheric	Super 2000 cars (conforming to the 2013 Appendix J, Article 254A)
<b>RC2</b>	<b>Group R4 (VR4)</b>	Group R4 cars conforming to the 2019 Appendix J, Art. 260 The cars registered in CNRD 2019 at R4 Group can use the following optional alternatives: a) Restrictor's internal diameter can have max. 34 mm.
	<b>Group R4 (VR4K)</b>	Cars fitted with R4 Kit conforming to the 2019 Appendix, Art. 260E.



RC2N	Group NR4 (Former N4)	Group N, According with Art. 254 Appendix J 2019.
	Group N+ national homology	<b>Group N+</b> The cars signed up in CNRD 2019 in N+ Group must comply with Appendix J-FIA, Art. 254 and with the following characteristics: d) Engine capacity of max. 2000 ccm, supercharged; e) Restrictor inside diameter can have max. 34 mm.; f) Can have composite rear and side windows complying with approval form no. N-5688, extension 18/02-VR4; minimum weight of 1.300 kg.
RGT	RGT	Group RGT cars conforming to the 2019 Appendix J, Art. 256.
RC3		<b>R3</b> (atmo / over 1600cc and up to 2000cc – VR3C and turbo over 1067cc and up to 1333cc – VR3C). Conforming to Appendix J, Art. 260.
		<b>R3</b> (turbo / up to 1620cc / nominal – VR3T) - Group R cars conforming to the 2019 Appendix J, Art. 260.
		<b>R3</b> (diesel / up to 2000cc / nominal – VR3D) - Group R cars conforming to the 2019 Appendix J, Art. 260D.
		<b>Grupa A</b> - over 1600cc and up to 2000cc - Group A cars conforming to the 2019 Appendix J, Art. 255.
		<b>Super 1600</b> - Group A cars conforming to the 2019 Appendix J, Art. 255.
RC4	RC4A	<b>R2</b> (atmo over 1600cc and up to 2000cc – VR2C and turbo over 1067cc and up to 1333cc – VR2C) - Group R cars conforming to the 2019 Appendix J, Art. 260.
RC4	RC4B	<b>R2</b> (atmo over 1390cc and up to 1600cc – VR2B and turbo over 927cc and up to 1067cc – VR2B) – Group R cars conforming to the 2019 Appendix J, Art. 260 and Group R cars conforming to the 2018 Appendix J, Art. 260 (VR2B homologated before 31/12/2018).
		<b>Kit-car over 1600 cmc</b> - up to 1600cc Group A Kit Cars with a corrected cylinder capacity of less than 1600cc on condition that the homologation is accepted by the FIA as eligible for the Championship concerned.
		<b>Grupa A</b> - up to 1600cc Group A cars conforming to the 2019 Appendix J, Art. 255.
		<b>Grupa N</b> - over 1600cc and up to 2000cc Group N cars conforming to the 2019 Appendix J, Art. 254.



RC5	R1 (atmo up to 1600cc - VR1 and turbo up to 1333cc - VR1) Group R cars conforming to the 2018 Appendix J, Art. 260 (VR1A and VR1B homologated before 31/12/2018).
	R1 (atmo up to 1600cc - VR1A/VR1B and turbo up to 1067cc - VR1A/VR1B) - Group R cars conforming to the 2018 Appendix J, Art.260 (VR1A and VR1B homologated before 31/12/2018).
	Grupa N - up to 1600cc - Group N cars conforming to the 2019 Appendix J, Art. 254.
NAT 11	Group H (4WD) - restrictor 36 mm
NAT 12	Group H (2WD)

FIA Classes, TER classes and national classes will be shown in separated entry list, classifications (official or unofficial) and / or joined results of the Special Stages during or after the event (Art. 4.4.5 of the FIA - RRSR 2019).

Details of national classes can be found in the Dunlop 2019 National Rally Championship Regulations ([click here](#)).

### Classes CNRVID

*According to CNRVID Regulations 2019 ([click here](#)).*

### Classes CNR2D

*According to CNR2D Regulations 2019 ([click here](#)).*

- Group A: 2 WD
  - Class 1 - max 1600 cmc;
  - Class 2 - over 1600 cmc;
  - Class 3 - Class RC5 / CNRD.
- Group B: 4 WD

### 4.5 Entry fees:

#### 4.5.1 Quantum:

#### TER

- 360 € - Classes RC2 - RC5;
- 60 € - Shakedown.

#### CNRD:

- 360 € - Classes RC2, RC2N, RC3, RGT, RC4, NAT 11, juniors enrolled in these classes - include quantum TER;
- 240 € - Classes RC5 and NAT 12, Manufacturer Cup and juniors over 18 who join these classes - include quantum TER;





- FREE - Junior juniors under 18 if they enroll in RC5 or NAT 12 classes;
- 60 € - Shakedown.

**CNRVID:**

- 360 € - Crew;
- 60 € - Shakedown.

**CNR2D:**

- 200 € - Group B;
- 130 € - Group A;
- 30 € - Shakedown.

**Team:**

**CNRD:**

- 120 € for 3 crews team;
- 240 € for 4 crews team;
- 300 € for 5 crews team.

**CNR2D:**

- 50 €.

For CNRD crews wishing to participate in TER, the registration fee from CNRD also includes the TER registration fee. To the registration fee will be added to the license fee to ASN. The ASN One Event License is 250 RON / sportsman. License application is made by email to [cnak@acr.ro](mailto:cnak@acr.ro) until 20 September 2019. The deadline for payment is 23 september 2019.

**4.5.2 Payment details:**

Entry fees must be paid by bank transfer into the following bank account:

Bank: Banca Transilvania  
 IBAN: RO19 BTRL RONC RT00 8667 5702 (RON)  
 RO66 BTRL EURC RT00 8667 5702 (EUR)  
 SWIFT: BTRLRO22  
 Account owner: Motorhome Napoca Rally Team  
 Purpose: Driver name and competition number

**The payment of the entry fees has to be made latest until the closing date according to Art. 4.1, otherwise the entry will not be accepted.**



Competitors who wish to register only for the Romanian National Championship can pay the entry fee after the closing date specified at Art. 4.1 with an increase of 50%.

4.5.3 Enrollment fee increased according to art. 4.5.2 and the Shakedown fee is payable only for entries for recognition and release of technical documentation and signing up for recognition will only be made after all fees due to you have been paid organizing.

#### 4.6 Entry package

	TER	CNRD	CNR2D	CNRVID
<b>Service Park area</b>	40 m <sup>2</sup>	40 m <sup>2</sup>	40 m <sup>2</sup>	40 m <sup>2</sup>
<b>Car Inscriptions</b>				
• Number reconnaissance	2	2	2	2
• Service	1	1	1	1
• Event logo with racenumber	1	1	1	1
• Compulsory advertising	4	4	4	4
<b>Documents</b>				
• Supplementary Regulations	www.transilvaniarally.ro			
• Road Book	1	1	1	1
• Rally Ghid	www.transilvaniarally.ro			
• Auxiliary Road Book	1	1	1	1
<b>Passes</b>				
• Crew	2	2	2	2
• Crew Manager	1	1	1	1
<b>Extra</b>				
• Extra space in the service park	10 €/m <sup>2</sup>	10 €/m <sup>2</sup>	10 €/m <sup>2</sup>	10 €/m <sup>2</sup>

#### 4.7 Refund:

Entry fees will be refunded in full:

- In case the rally is not taking place;
- To competitors whose entry has not been accepted.

Registration fee will be partially refunded:

- 75 % competitors whose registration has not been validated;
- 50 % competitors / crews who, for reasons of force major, certified / by ASN /

FRAS, are unable to start.



## 5. INSURANCE

**5.1** The insurance fee is included in the registration fee and guarantees to all competitors to cover any civil damage to third parties. The competitors will be insured by the organizer on all Special Stages through a civil liability insurance against all third party risks at a value of **650.000 RON** (approximate **15.000 €**).

**5.2** This insurance will be concluded for all people within the rally organization (especially Officials) and co-drivers (on all Special Stages), accredited journalists / photographers and drivers with a foreign drivers' license, demanding that there is no other casualty insurance concluded by a local or foreign insurance company.

**5.3** Legal liability insurance is compulsory for all cars participating at the rally. This has to be contracted by the owner of the car. The legal liability insurance has to cover all damages on all routes excepting the Special Stages and the Shakedown. The existence of this legal liability insurance has to be proved at the administrative check.

**5.4** Service, recce and auxiliary-vehicles are excluded from this organization liability cover insurance. In case of any accident with only material and no human damages, the competitor has the absolute obligation to report such damages immediately at the following Time Control Point. A detailed written report at the end of the Leg must be filled in at the Rally Headquarters. Furthermore, in case of physical damage, the driver must immediately inform the Rally Headquarters.

## 6. ADVERTISING AND IDENTIFICATION

**6.1** The organizer advertising notes on the rally plates and competition number is compulsory and cannot be refused by the competitors (Appendix IV). This material will be issued by the organizer and has to be affixed at the cars prior the scrutineering and maintained the entire rally stage

**6.2** **Compulsory organizer advertising:** "Transilvania Rally 2019".

**6.3** **Compulsory FRAS advertising:** According to 2019 CNRD Regulations.

**6.4** Advertising for partners of the crews participating in the Transilvania Rally 2019:

**6.4.1** All crews registered at the Transilvania Rally 2019 will be able to organize sports advertising activities (tent, branding, sampling, hostesses, sessions of signings, etc.) only in the area assigned to the service park. Rally locations: Start / finish area, award



ceremony, press conference room, VIP area, Superspecial Start are exclusive venues for organizer's partners. The crews can organize sports advertising in these areas only with the written consent of organizer. Otherwise, the organizer will sanction the crew with a fine of € 1000.

**6.4.2** Promoting crew partner in the form of commercial advertising (direct product promotion, services, offers) without the written permission of the organizer (via contract) is interpreted as prohibited advertising and will be sanctioned by organizer by canceling the registration of the crew from Transilvania Rally 2019 without the registration fee being returned.

## 7. TYRES

### 7.1 Compliance

Only the use of tarmac tyres is allowed. All tyres must comply with Art. 59 of 2019 CNRD Regulation.

**7.2 Tyres used for reconnaissance and / or Shakedown:** without restrictions.

**7.3** At the Transilvania Rally 2019 the maximum number of tyres that can be used is:

	4WD and RGT Class	2WD
TER / CNRD	12	10 tyres for RC2 - RC4
		8 tyres for the rest of the classes
		Without restriction for NAT 11 and NAT 12
CNR2D		Without restriction
CNRVID		Without restriction

### 7.4 Marking and control

Tyre marking is mandatory for all participants in the Transilvania Rally 2019. During the rally, the procedures will be as follows:

A tyre bar code reading area will be set at each exit from the Service Park. The crew must stop the machine and wait for the instructions technical commissioners. A tyre check area can be set at the entrance to the service park.

At any time of the rally, checks can be made to verify compliance tires.



7.5 It is permissible to modify the hand cutting, in accordance with the specifications given by the manufacturer.

## 8. FUEL AND REFUELING

### 8.1 Refueling zones:

- **Sports Hall, Cluj-Napoca (at the exit from the Service Park)**

GPS: 46° 46.009'N, 23° 33.970'E

- **Renote refuel zone: Beliș, Cluj Country**

GPS: 46° 40.858'N, 23° 1.787'E

### 8.2 Refuelling in commercial stations (Art. 58.3 FIA-RRSR)

There will be additional commercial filling / gas stations along the route. Drivers may use fuel from pumps at the commercial filling stations marked in the Road Book. The crew may tank using only station's fuel pump, using the on-board equipment, with no external physical assistance. Help coming from third parties is not allowed. [NAT 11 and NAT 12 Classes can feed in gas stations with own fuel.](#)

8.3 Only for the purpose of assisting with the refuelling procedure of their car, twoteam members of each crew, and wearing a reflective green tabard, according to Road Traffic Laws, may access this zone

8.4 **The used fuel** must respect the prescriptions of Appendix J (Ar. 252 - 9) of CSI - FIA for TER competitors **and for CNRD, CNRVID competitors. CNR2D competitors must respect Art. 4.7 of 2019 FRAS CNR2D Regulations.**

## 9. RECONNAISSANCE

### 9.1 Registration procedure

9.1.1 Before the beginning of the reconnaissance registration procedure, the registration of the reconnaissance car is absolutely mandatory. The Registration will take place at the Rally HQ according to the Art. 3 Schedule. The reconnaissance car must be according Art. 25.1 of FIA - RRSR 2019 and [Art. 25.1 of 2019 FRAS CNRD Regulations.](#)

9.1.2 The Organizer will provide reconnaissance numbers, which have to be placed at the right top of the front windscreen and on the rear side-windows. It is not allowed to displace this number during the entire reconnaissance. Drivers must immediately inform the Secretary of the event, in case of changing the reconnaissance car.



### 9.1.3 Rally Safety GPS Tracking System

The tracking system rent will be paid by every crew to the FRAS delegate at the Rally HQ, in cash (equivalent of 40 € in RON TER, **CNRD and CNRVID and 20 € for CNR2D**) before receiving the documents. GPS device for reconnaissance will be the same as the car competition. It must be mounted on race car until Friday, 27 September 2019, at 08:00 for TER, **CNRD, CNRVID and until Friday, 27 September 2019, at 11:00 for CNR2D going to shakedown and at 14:00 for CNR2D who don't go to shakedown.**

### 9.1.4 Number of persons on board

During each passage through a special stage, **a maximum of 2 persons (the crew)** is permitted in the car

## 9.2 Itinerary

The reconnaissance may be done according to Art. 3 and Appendix II. It is not mandatory for the crews to attend the reconnaissance.

## 9.3 Running of reconnaissance (*Art. 25 FIA - RRSR 2019*)

### 9.3.1 Speed limit (*Art. 20.3 FIA - RRSR 2019*)

All reconnaissance of the special stages have to be done at reasonable speed in accordance with the Romanian Traffic Regulations. The maximum speed set for the reconnaissance of the special stages is **70 km/h**, excepting those cases in which there are other speed limit signs. The speed limit signs determine the speed limit. Additional limitations may be marked in the Road Book.

### 9.3.2 Direction

Each crew may drive on the special stages only in the direction of the rally, except for the special stage Mărișel or unless, in a Communication of the Sports Director, it is allowed to travel in the opposite direction on some short road sections. The crews must always enter and leave the Special Stages through the Start and Stop controls.

### 9.3.3 Restriction of reconnaissance

Any driver, or his co-driver, who has entered or intends to enter the rally and who wishes to drive from the date of publishing of the present Regulations - until the reconnaissance start on **Wednesday, 25 September 2019, 09:00**, on any road which is - or might be used as a Special Stage in that rally, may only do so after he has obtained the Organizer's written permission. This shall not apply when the person is known to live along this specific road. Failure to respect this rule shall result in the driver being reported to the Stewards.



9.3.4 During the reconnaissance there are permitted **only 2 passages** on each special stage (special stages which will be run twice are considered to be one special stage reconnaissance).

9.3.5 The competitors will not receive and will not use the reconnaissance Card. The competitors will sign at the start / stop of every special stage in the official's registry in position.

## 9.4 Control of reconnaissance

### 9.4.1 General

Checks may be carried out by Police or Officials of the event. Infringements will be reported to the Clerk of the Course. The involvement of any competitor in a road accident on special stages, for his fault, **is sanctioned by the Rally Commission with a fine of up to 1000 € and suspended for two stages of CNRD, CNRVID or CNR2D.**

### 9.4.2 Speeding

Checks may be carried out by Police or Officials of the event with radar and tracking devices. Speeding will be reported to the Clerk of the Course and Stewards and will be sanctioned according to Art. 20.2 și 20.3 FIA - RRSR 2019. **For the CNRD, CNRVID and CNR2D crossing the speed limit will be punished according to the 2019 FRAS Regulations.**

## 9.5 Infringements against reconnaissance rules

Any infringement against the above mentioned rules will be reported to the Clerk of the Course and will be penalized according to the FIA - RRSR 2019.

## 10. ADMINISTRATIVE CHECKS

### 10.1 Location, date and schedule

**Location:** Rally Headquarter, Cluj-Arena, Cluj-Napoca

Adress: Stadionului Alley No. 2, Cluj-Napoca, Cluj, Romania

GPS: 46° 46.105'N, 23° 34.287'E

**Date:** According to the program of Art. 3 Schedule. Administrative checks may be carried out at the registration for reconnaissance and distribution materials from Wednesday, 25 September at 15:00, but no later than Thursday, 26 September, at 17:00.

### 10.2 Documents

The following document are mandatory for the registered competitors in TER and must be presented during the administrative check:



- Valid Competitors License (Entrant);
- Competitors License (Driver / Co-driver);
- Driver and Co-driver passports or I.D.;
- Valid driver license (or replacement) Driver / C-driver (if necessary);
- ASN authorization for all foreign competitors;
- Car registration papers;
- Car insurance certificate (include Green Card);
- Declaration of consent by the owner of competition car (if necessary);
- Completion of all details on the entry form.

For the other competitors (except competitors attending the first round in the national championship) it is enough to present the driving license for driver/codriver and the race car's insurance.

**10.3** Postponement of administrative checks over the scheduled time at Art. 4 may be done only with the approval of the Chief Secretary and for a sum of **20 € for TER, CNRD and CNRVID and 10 € for CNR2D**. If the postponement also involves a postponement of the scrutineering, the amount is **220 € for the TER, CNRD and CNRVID and 110 € for the CNR2D**.

## 11. SCRUTINEERING, SALES AND MARKING

### 11.1 Location, date and schedule

**Location:** Sports Hall, Cluj-Napoca (Service Park)

Adress: Independentei Street

GPS: 46° 45.984'N, 23° 33.902'E

**Schedule:** Thursday, 26 September 2019, 14:00 - 18:30 for TER, CNRD, CNRVID, optional for CNR2D

Friday, 27 September 2019, 08:30 - 09:30 for CNR2D.

A detailed schedule will be published separately after the administrative checks.

Documents to be presented:

- Homologation document (original);
- FIA technical passport;
- Car pass fully filled – in.

### 11.2 Safety equipment

All competitors must present all items of clothing and safety equipment to be used during the rally, including helmets and a FIA approved head-restraining devices (HANS)





which they intended to use. Appendix L Chapter III will be checked.

### 11.3 Sound levels

A sound level check may be carried out to ensure compliance with FIA Regulations, Appendix J Article 252.3.6. Sound levels may also be checked at any point during the event. Failure to comply may result in disqualification or start refused by the Stewards

### 11.4 Special national requirements

CNRD competitors will need to present only the equipment which has not been verified during the previous CNRD 2019 rounds.

### 11.5 Safety Tracking System

All cars must be fitted with the Safety Tracking System. Each team has to install the necessary equipment before scrutineering, according to the installation instructions. Disconnecting the Rally - Tracking - System for One Event license teams will be performed in last Park Ferme (TC 10A - TER, CNRD, CNRVID and TC 5A - CNR2D) by a member of the GPS tracking team.

**Crews who fail to complete the rally and who have One Event license must return the tracking system at the Rally HQ no later than Saturday, 28 September 2019, at 19:00.**

**Any loss or damage brought to the equipment will attract a penalty of 400 €.**

## 12. OTHER PROCEDURES

### 12.1 Shakedown

#### 12.1.1 Eligibility

Only crews which successfully passed the administrative checks and scrutineering are accepted. Their participation is possible only if applying all regulations as if it were a special stage (marking and advertising must be completed, all items of clothing as in the competition etc.). **Shakedown can be run maximum 5 times.**

#### 12.1.2 Shakedown fee

- TER, CNRD and CNRVID - 60 €;
- CNR2D - 30 €.



### 12.1.3 Location and schedule

**Location:** Florești, Cluj Country, GPS: 46° 45.471'N; 23° 29.771'E;

**Schedule:** Friday, 27 September 2019;

**Time:**

TER; CNRD - Classes RC2, RC2N, RC3, RC4, NAT 11 - 09:00 - 13:30;

CNRD - Classes RC5, NAT 12; CNR2D and CNRVID - 11:15 - 13:30.

### 12.1.4 Shakedown Service Park

**Location:** Florești, Cluj Country, GPS: 46° 44.943'N; 23° 28.629'E.

It will host a dedicated Shakedown Service Park.

### 12.1.5 Guests

**Everyone, except the pilot and co-pilot, who wishes to participate in the shakedown must have signed the statement (Appendix VIII) waving the Organizers as well the driver and / or a competitor of any consequence that may result from an accident.** This statement accompanied by a photocopy of the Passport or Identity Card, must reach the Rally Headquarter by Thursday, 26 September 2019, at 17:00.

**12.1.6** Any private tests without the organizer's approval in the week of the rally, except Shakedown, in Cluj County, will be charged a fine of 1000 €, payable to the organizer. In order to avoid any deviation in this regard, the organizer will organize a private test session on Tuesday, 24 September 2019.

**12.1.7** The technical assistance vehicles for Shakedown must be vehicles with a maximum permissible mass of 3.5 t.

## 12.2 Special procedures for the Service Park

### 12.2.1 Location

#### Sports Hall, Cluj-Napoca

Address: Independenței Street

GPS: 46° 45.984'N, 23° 33.902'E

The service park opens on Wednesday, 25 September 2019, at 09:00.

**Service Park Official:** Alexandru CRISTEA - +40 735 852 723

**Surface:** Tarmac.

It is forbidden to park platforms within the Service Park or any other location that could interfere with traffic in the area. The organizer may propose Clerk of the Course sanction



crews that do not comply with this rule. Platforms must be parked at the next location:

### **Sun, Cluj-Napoca**

Address: 1 Decembrie 1918 Boulevard, Cluj-Napoca, Cluj, Romania

GPS: 46° 45.786'N, 23° 32.746'

#### **12.2.2 Allocation and provisions of service areas**

A service area of 40 m<sup>2</sup> will be provided by the organizer for crews. Allocation of extra space is based on available space and is charged with 10 € / m<sup>2</sup>. The organizer reserves the right to verify and measure the space provided by it. Detection by organizer of exceeding the allocated space will be charged with 25 € / m<sup>2</sup>.

The crew location in the Service Park will be according to a plan displayed at Rally HQ in the week of the race and observing the organizer's instructions.

#### **12.2.3 Speed limitation (Art. 49.4 FIA- RRSR 2019)**

**The max speed in the Service Park may not exceed 30 km/h.** Speeding will be penalized by the Clerk of the Course according to FIA - RRSR 2019.

#### **12.2.4 Behaviour within the Service Park**

Access to service park is only allowed for competition cars and for service cars identified by the collars ("Service" and "Auxiliary") distributed by organizer for TER foreign crews or [FRAS with license issuance for national crews](#).

Damages of the surface of the Service Park have to be avoided. Nails, screws or other material for fixing items on the surface of the Service Park are not allowed. For damages brought to the service area assigned to the crew, the crew is liable.

Crews have to use and apply a sufficiently large plastic ground-sheet under the competition car, as long as service or technical manoeuvres are carried out.

No sustainable and avoidable damages shall be caused because of service manoeuvres.

Refuelling is allowed only at the foreseen refuelling zone.

Unreasonable behaviour of teams, acting against the aim of environmental protection, any harm produced to the image of motorsport will be punished, even if there are no detailed regulations mentioned.



After the rally session, the Service Park has to be handed over in clean condition. The crews are responsible for the removal of their waste and sewage.

### **12.3 Starting system of Special Stages**

At the start of each special stage, there will be a clock with a digital LED display showing the time, minute, second and two green and red LED matrices. The display will be connected to a GPS / GSM equipment with a satellite connection to synchronize all time equipment on the special stages. Thus, connecting all equipment to the same satellite avoids possible time differences between devices.

The connection to the GSM network is necessary for the transmission of time to the Secretariat.

The clock will work in the normal (chronological) order until a full minute. The transmission of time is valid as long as there is a GSM signal instead of the position of the stations.

After the start / arrival of any competitor, the time recorded by the chronoprinter will be sent to the Secretariat's Timekeeping Center for verification and display on the rally site ([www.transilvaniarally.ro](http://www.transilvaniarally.ro)) and the FRAS ([live.fras.ro](http://live.fras.ro)) site.

If the competitor's start is after the 00 second of the minute, the clock will indicate the green color for 20 seconds. If a car can not start within 20 seconds of the full minute, it will be excluded and immediately repositioned in a safe place.

The ideal start time (the completed minute) and the actual start time of the competitor will be printed on the chronoprinter's tape; so if a competitor anticipates the start before the second of a hundred minutes, this will be visible to the referee in the Start position and further away from the Secretariat's Timekeeping Center.

An optical start detection system (photocells) will be located 40 cm beyond the starting line.

In the event of a malfunction of the starting system, the start will be given in accordance with Art. 37.3 FIA - RRSR 2019.

### **12.4 Procedures for Super Special Stage / SS Florești / Power Stage**

#### **12.4.1 Super Special Stage**

The competitors will check-in into the TC 10 - TER, [CNRD](#), [CNRVID](#) / TC 5 - [CNR2D](#) and will take the start in SS 10 - TER, [CNRD](#), [CNRVID](#) / SS 5 - [CNR2D](#) according to the



indication of Officials (after the previous competitor has completed the Special Stage).

SS 10 - TER, [CNRD](#), [CNRVID](#) / [TSS 5 - CNR2D](#) is considered completed if the route from the Appendix VI has been followed and respected.

The start time will be passed in the timecard at the STOP arbitration point.

Possible further instructions concerning the running of the SS 10 - TER, [CNRD](#), [CNRVID](#) / [SS 5 - CNR2D](#) will be given in a bulletin.

#### **12.4.1.1 Penalties**

During the Super Special Stage, the crews are responsible for respecting the indicated route and the number of laps, which are clearly indicated in the Road Book.

In case of exceeding the number of laps or lengthening the route, the actual driving time including the time for the exceeded laps, will be counted.

In case of less number of laps or in case of shortening the route, the slowest class driven time, under normal competition conditions, plus 10 seconds penalty will be counted for the relevant crew.

For the barriers of the chicane, the penalties will be applied by the Clerk of the Course based on the report of the judge of facts. (To be nominated by a later bulletin). Penalties for chicanes:

- Moving a chicane barrier (displacement must be significant) - 3 seconds;
- Crossing a chicane barrier - 6 seconds;
- Crossing two or more chicane barriers - 10 seconds.

#### **12.4.1.2 Failure to complete the Super Special Stage**

If a car fails to complete the Super Special Stage the 2019 FIA-RRSR / [2019 FRAS Regulations](#) for Rally 2 (Super Rally) will be applied.

**12.4.1.3** The red flag will be used during the Super Special Stage and will be strictly restored. The meaning of the red flag is to stop immediately.

#### **12.4.2 SS Florești**

The competitors will check-in into the TC 4 , TC 7 , TC 9 - TER, [CNRD](#), [CNRVID](#) / [TC 4 - CNR2D](#) and will take the start in SS 4 , SS 7, SS 9 - TER, [CNRD](#), [CNRVID](#) / [SS 4 - CNR2D](#) according to the indication of Officials.

The start time will be passed in the timecard at the STOP arbitration point.

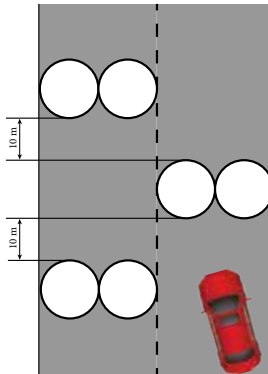
### 12.4.3 Power Stage

- SS 9 - Dângău 2 for TER, CNRD, CNRVID;
- SS 3 - Dângău for CNR2D.

## 12.5 Chicanes

**12.5.1** On the special stages Florești (3,47 km and 4,20 km), Mărișel (0,85 km; 1,37 km and 1,75 km) and SSS Cluj-Arena (According Appendix VI) as a safety measure, will be placed chicanes.

**12.5.2** The chicanes are made of circular straw bales with a minimum weight of 400 kg, placed as in Pic. 12.5, beginning with the centerline of the road with 10 meters distance between rows.



*Pic. 12.5 - Chicane*

### 12.5.3 Penalties for chicanes

For the barriers of the chicane, the penalties will be applied by the Clerk of the Course based on the report of the judge of facts. (To be nominated by a later bulletin). Penalties for chicanes:

- Moving a chicane barrier (displacement must be significant) - 3 seconds;
- Crossing a chicane barrier - 6 seconds;
- Crossing two or more chicane barriers - 10 seconds.

## 12.6 Ceremonial Start

The ceremonial start is mandatory for all competing cars and crew members and will take place on **Thursday, 26 September 2019, at Cluj-Arena Esplanade, Cluj-Napoca, starting at 20:30**. Failure to attend Festivals will be reviewed and sanctioned by the Clerk of the



---

Course. The start list for the ceremonial start will be announced.

### 12.7 Autograph session / Meet the crews

An autograph session / meet the crews will be organized Thursday, 26 September 2019, between 19:30 - 20:30, at Cluj-Arena Esplanade, Cluj-Napoca.

### 12.8 Starting list and intervals

#### Leg 1

- FIA / TER priority drivers and FRAS priority drivers based on the first six 2019 CNRD rounds classification;
- Other CNRD FRAS interleaved with TER drivers, in the order of the ranking of the performance coefficient on the special stages;
- CNRVID drivers, in the order of the ranking of the performance coefficient on the special stages;
- CNR2D drivers, in the order of the ranking of the performance coefficient on the special stages.

#### Leg 2

- FIA / TER priority drivers and FRAS priority drivers;
- Other TER drivers and other CNRD FRAS drivers based on Leg 1 classification;
- CNRVID drivers based on Leg 1 classification;
- CNR2D drivers based on Leg 1 classification.

**Starting interval:** 1 minute minimum.

### 12.9 Restart after retirement

according to Art. 46 FIA-RRSR 2019.

### 12.10 Emergency number

**The emergency number of the rally will be:  
+40 745 039 736**

It is mandatory for all competitors to store this number in the mobile available in the rally car and to secure speed-dial for emergency cases.

### 12.11 Permitted early check in

Crews are authorized to check-in in advance without incurring any penalty at following time controls:



- TC 4A, TC 10A (TER, CNRD and CNRVID);
- TC 1C, TC 1D, TC 5A (CNR2D).

#### 12.12 Official time

Romanian GPS time.

#### 12.13 Change of timecard during the rally

The timecard will be issued and / or changed at the Time Control point at:

- TC 0, TC 3B, TC 4A, TC 4B, TC 7B, TC 9B, TC 10A (TER, CNRD and CNRVID);
- TC 0, TC 1D, TC 1E, TC 4B, TC 5A (CNR2D).

#### 12.14 Finish procedures

The rally ends at TC 10A (TER, CNRD and CNRVID) and at TC 5A (CNR2D).

Following the STOP arbitration point of the SSS Cluj-Arena, the first three crews from the TER General Classification and from the CNRD FRAS General Classification will be directed to an adjacent area, under the Park Fre rules, where they will wait for the evolution of the SSS Cluj-Arena to be completed of the first 12 competitors in the starting order.

After completing the SSS Cluj-Arena route of the first 12 crews in the starting order, the award ceremony will take place of the first three crews from the General TER Classification and from the CNRD FRAS General Classification, in reverse order will take place with the presence of cars and crews (drivers and co-drivers). The award ceremony will be celebrated on the award podium located in the immediate vicinity of SSS Cluj-Arena, at Cluj-Arena Esplanade.

**The final Park Ferme must be released no later than Saturday, 28 September 2019 at 00:00**

### 13. IDENTIFICATION OF OFFICIALS

The Marshals of the event will be identified by coloured tabards according FIA-RRSR 2019 Appendix III, art. 5.2.6.

### 14. PRIZES

**Cups for the first three crews (drivers and co-drivers) will be awarded to the following classifications:**





## TER:

- General Classification;
- TER2 Cup Classification;
- TER Productions Classification;
- 2WD Classification;

## CNRD FRAS:

- General Classification (RC2 - RC5 Classes);
- Teams Classification;
- Classes Classification;
- Juniors Classification;
- Rookies Classifications;
- Manufacturer Cups Classification;
- Front Wheels Drive Classification (2WFD);
- Rear Wheels Drive Classification (2WRD);
- OPEN Classification (all classes, include NAT 11 and NAT 12);

## CNRVID FRAS:

- I Category Classification;
- Classes Classification;

## CNR2D FRAS:

- Group A Classification;
- Group B Classification;
- Classes Classification;
- Teams Classification;

## 15. FINAL SCRUTINEERING

### 15.1 Location and schedule

**Location:** RMB Inter Auto Ford, Turzii Street 152, Cluj-Napoca - service entry from Cometei 3 - 5 Street.

**Schedule:** According Art. 3 - Schedule.



## 16. PROTESTS AND APPEALS

### 16.1 Protest fee

- The international protest fee (FIA) 500 €.

If the protest requires the dismantling and the reassembly of different parts of the car, the claimant must pay an additional deposit which will be settled by the Stewards of the Meeting, upon proposal of Scrutineers.

#### The national protest fee (FRAS)

- Protest for sportsman rules 240 €
- Technical protest involving:
  - One piece of a car 500 €
  - One part of a car 1200 €
  - Whole car 3500 €

### 16.2 Appeal deposits

National appeal: ASN - ACR Appeal Commission 1000 €

Fax: +40 21 222 4123, email: cnak@acr.ro

- International appeal deposit (FIA) 6000 €

#### National appeal (FRAS)

- Competition Commission 450 €
- Disciplinary Commission 450 €
- Appeal Commission 600 €



## Appendix I - ITINERARY

### Ceremonial Start Thursday, 26 September 2019

TC	Location	SS dist.	Liaison dist.	Total dist	Target time	First car due
	Cluj-Arena, Cluj-Napoca					20:30

Sunrise:	07:17
Sunset:	19:16

### Shakedown Friday, 27 September 2019

TC	Location	SS dist.	Liaison dist.	Total dist	Target time	First car due
SD	<b>Shakedown - Florești</b> TER; CNRD - Classes RC2, RC2N, RC3, RGT, RC4, NAT11	2,85				09:00 - 13:30
SD	<b>Shakedown - Florești</b> CNRD - Classes RC5, NAT12; CNRVID	2,85				11:15 - 13:30

### Start (Sections 1 & 2) Friday, 27 September 2019

TC/SS/RZ	Location	SS dist.	Liaison dist.	Total dist	Target time	First car due
0	<b>START - Service Park Sports Hall Cluj-Napoca</b>					
RZ	<b>START - Service OUT Sports Hall</b>					15:00
1	<b>Refuel - Sports Hall</b> Distance to next refuel	(38,40)	(59,64)	(98,04)		
1	Căpușu Mare	25,05	24,93	24,93	00:55	15:55
SS1	<b>CĂPUȘU MARE</b>					15:58
2	Răchițele	13,35	31,16	56,21	01:00	16:58
SS2	<b>BELIȘ 1</b>					17:01
RZ	<b>Remote refuel - Beliș</b> Distance to next refuel	(11,55)	(3,55)	(54,32)	(65,87)	
3	Mărișel	11,55	4,95	18,30	00:35	17:36
SS3	<b>MĂRIȘEL</b>					17:39
3A	Regroup A & Technical Zone A IN - Sports Hall		52,92	64,47	01:35	19:14
3B	Regroup A OUT - Service A IN				00:20	19:34
	<b>SERVICE A (Sports Hall)</b>	(49,95)	(113,96)	(163,91)	00:45	
3C	Service A OUT					20:19
RZ	<b>Refuel - Sports Hall</b> Distance to next refuel	(7,10)	(16,99)	(24,09)		
4	Florești	7,10	11,42	11,42	00:40	20:59
SS4	<b>FLOREȘTI 1</b>					21:02
4A	LEG 1 Finish - Park Ferme IN Cluj-Arena		4,47	11,57	00:30	21:32
	<b>FRIDAY Totals</b>	57,05	129,85	186,90		

Sunrise:	07:18
Sunset:	19:14

v.1 Itinerary Transilvania Rally 2019 (August 2019)



## Restart (Sections 3, 4 & 5) Saturday, 28 September 2019

TC/SS/RZ	Location	SS dist.	Liaison dist.	Total dist	Target time	First car due
4B	LEG 2 Start - Park Ferme Cluj-Arena					07:30
4C	Park Ferme OUT Cluj-Arena					07:35
	Service B IN		1,10	1,10	00:05	
	<b>SERVICE B (Sports Hall)</b>				<b>00:20</b>	
4D	Service B OUT					07:55
RZ	Refuel - Sports Hall					
4	Distance to next refuel	(13,35)	(78,93)	(92,28)		
5	Răchitea		75,38	75,38	01:30	09:25
SS5	<b>BELIS 2</b>	<b>13,35</b>				<b>09:28</b>
RZ	Remote refuel - Beliș		(3,55)			
5	Distance to next refuel	(37,27)	(32,22)	(69,49)		
6	Rășca		12,73	26,08	00:57	10:25
SS6	<b>DĂNGĂU 1</b>	<b>30,17</b>				<b>10:28</b>
7	Florești		18,48	48,65	01:00	11:28
SS7	<b>FLORESTI 2</b>	<b>7,10</b>				<b>11:31</b>
7A	Regroup B & Technical Zone B IN - Sports Hall		4,56	11,66	00:20	11:51
7B	Regroup B OUT - Service C IN				00:10	12:01
	<b>SERVICE C (Sports Hall)</b>	<b>(50,62)</b>	<b>(111,15)</b>	<b>(161,77)</b>	<b>00:30</b>	
7C	Service C OUT					12:31
RZ	Rrefuel - Sports Hall					
6	Distance to next refuel	(37,27)	(101,87)	(139,14)		
8	Rășca		78,83	78,83	01:30	14:01
SS8	<b>DĂNGĂU 2 - Power Stage</b>	<b>30,17</b>				<b>14:04</b>
9	Florești		18,48	48,65	01:00	15:04
SS9	<b>FLORESTI 3</b>	<b>7,10</b>				<b>15:07</b>
9A	Regroup C & Technical Zone C IN - Sports Hall		4,56	11,66	00:20	15:27
9B	Regroup C OUT - Service D IN				00:10	15:37
	<b>SERVICE D (Sports Hall)</b>	<b>(37,27)</b>	<b>(101,87)</b>	<b>(139,14)</b>	<b>00:30</b>	
9C	Service D OUT					16:07
RZ	Refuel - Sports Hall					
7	Distance to next refuel	(2,45)	(1,75)	(4,20)		
10	Cluj Napoca		1,45	1,45	00:08	16:15
SS10	<b>SSS CLUJ-ARENA</b>	<b>2,45</b>				<b>16:18</b>
10A	Rally Finish - Park Ferme IN Cluj-Arena		0,30	2,75	00:06	16:24
	<b>SATURDAY Totals</b>	<b>90,34</b>	<b>215,87</b>	<b>306,21</b>		

Sunrise:	07:19
Sunset:	19:12

	Nr. PS	Km SS	Etapă	Total	% din PS
Friday (Sections 1 & 2)	4	57,05	129,85	186,90	30,52%
Saturday (Sections 3, 4 & 5)	6	90,34	215,87	306,21	29,50%
<b>Totals</b>	<b>10</b>	<b>147,39</b>	<b>345,72</b>	<b>493,11</b>	<b>29,89%</b>

v.1 Itinerary Transilvania Rally 2019 (August 2019)



## Appendix II - RECONNAISSANCE SCHEDULE

Day / Date	Time allowed	Special Stage	Reconnaissance allowed
Wednesday 25 September 2019	09:00 - 14:00	Căpușu Mare	TER, CNRD, CNRVID
	09:00 - 19:00	Beliș	
		Mărișel *	
14:00 - 19:00	Dângău		
Thursday 26 September 2019	08:00 - 13:00	Căpușu Mare	TER, CNRD, CNRVID, CNR2D
	08:00 - 18:00	Beliș	
		Mărișel *	
	13:00 - 18:00	Dângău	
	09:00 - 12:00	Florești	
22:30 - 00:00	SSS Cluj-Arena **		
Friday *** 27 September 2019	09:00 - 11:30	Căpușu Mare	CNR2D
	09:00 - 14:00	Beliș	
	11:30 - 14:00	Dângău	
Unrestricted	Unrestricted	Shakedown ****	TER, CNRD, CNRVID, CNR2D
		SSS Cluj-Arena *****	

\* After the first passage on the special stage Mărișel, subject to strict compliance with the rules imposed by the Romanian Traffic Regulations and strict monitoring through the GPS system, it is approved to return to the same road sector at the start of special stage Mărișel for the second reconnaissance pass.

\*\* Thursday, 26 September 2019, at 22:30 - 00:00, reconnaissance of SSS Cluj-Arena will be made with closed and with reconnaissance car.

\*\*\* Friday, 27 September 2019, reconnaissance for CNR2D will be made only with GPS monitoring.

\*\*\*\* Shakedown reconnaissance can be made unrestricted with reconnaissance car.

\*\*\*\*\* SSS Cluj-Arena reconnaissance can be made unrestricted, on foot, with road traffic open to public traffic.

**Important: Except special stage Mărișel, is strictly forbidden on the special stage return!**

**Note: Speed limits of during the entire reconnaissance session, the competitors must comply with rules and regulations of Romanian Road Code and legislation in force, and on the special stages not to exceed the speed of 70 km/h, in areas where no other speed limit are signaled by signposts. A tolerance of 10 km/h is allowed.**

**The involvement of any competitor in a road accident on special stages, for his fault, is sanctioned by the Rally Commission with a fine of up to 1000 € and suspended for two stages of CNRD, CNRVID or CNR2D.**



## Appendix III - COMPETITORS RELATION OFFICER

**Mihai LĂCĂTUȘ**  
**Phone: +40 746 668 855**

**Spoken languages:**

- Romanian
- English
- Italian
- French



Date	Schedule	Location
Tuesday 24 September 2019	18:00 - 22:00	Rally Hq Cluj-Arena, Cluj-Napoca
Wednesday 25 September 2019	08:00 - 20:00	Rally HQ Cluj-Arena, Cluj-Napoca
	20:00	Welcome cocktail
Thursday 26 September 2019	08:00 - 14:00	Rally HQ Cluj-Arena, Cluj-Napoca
	14:00 - 18:30	Scrutinering
	18:30 - 19:00	Competitors Briefing
	19:30 - 22:00	Ceremonial Start
Friday 27 September 2019	09:00 - 13:30	Shakedown - Florești
	15:00 - 22:00	Service Park and Regroups
Saturday 28 September 2019	07:30 - 18:00	Service Park and Regroups
	19:30	Award ceremony



## Appendix IV - COMPETITION NUMBERS AND ADVERTISING

1) **Front door:** 2 panels 67 cm wide by 17 cm high including a 1 cm white surround, competition number box which shall always be at the front of the panel. The top of the plate shall be between 7 cm and 10 cm below the lower limit of the window.



2) **Side windows:** 2 numbers for each rear side window which shall be 20 cm high with a stroke width of at least 25 mm, coloured fluorescent orange (PMS 804), and may be reflective. These numbers shall be placed on the rear side windows adjacent to the crew's name.



3) **Front plate:** One plate fitting into a rectangle 43 cm wide by 21.5 cm high which shall include at least the competition number and full name of the rally.



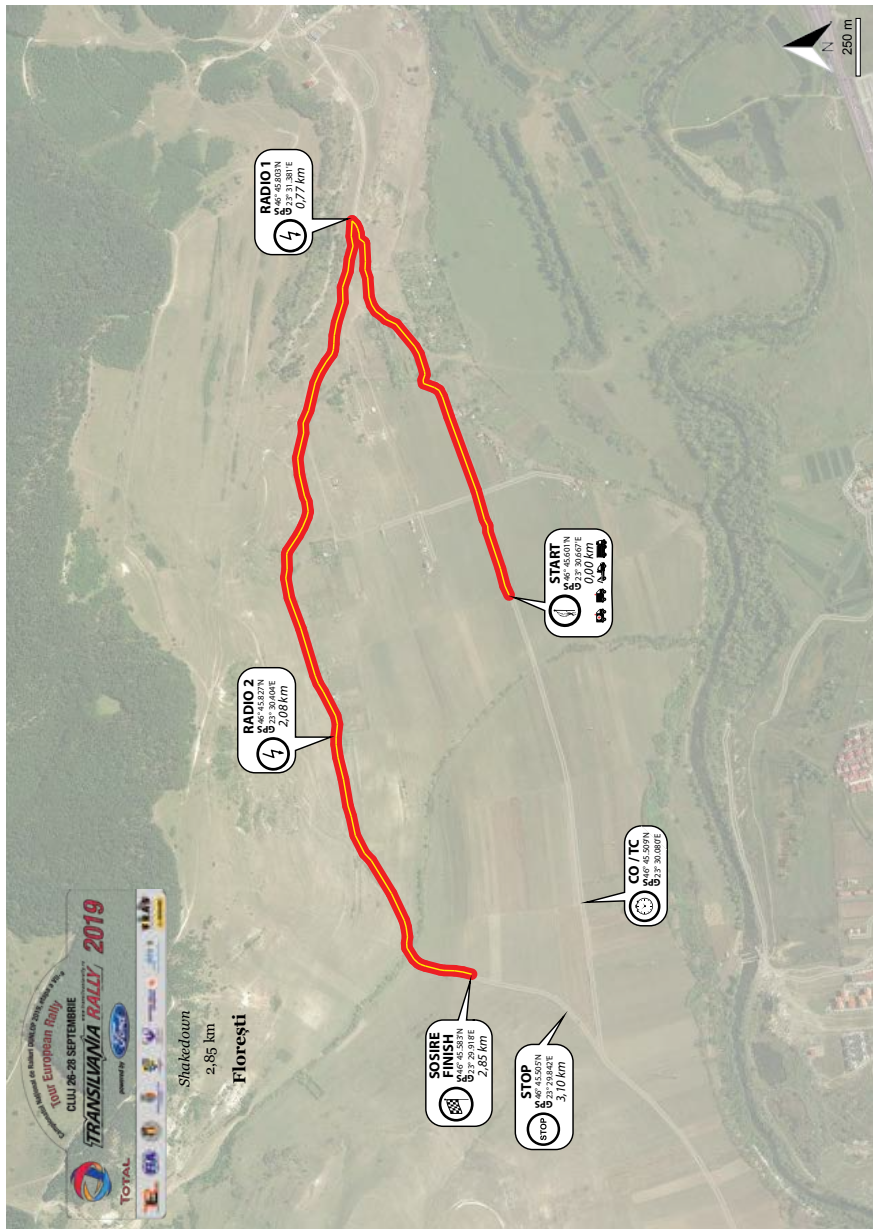
4) **Rear window:** One rear window panel measuring a minimum of 90 cm length and 10 cm high shall be positioned at the top of the rear window. An adjacent area of 15 cm shall contain a fluorescent orange (PMS 804) 14 cm height competition number on a clear background. This

number may be reflective and must be visible from the rear at eye level.

5) **Roof panel:** One roof panel, 50 cm wide by 52 cm high, to be placed on the roof with the top towards the front of the car. A matt black competition number, 5 cm wide by 28 cm high, will be displayed on a matt white background 50 cm wide by 38 cm high.



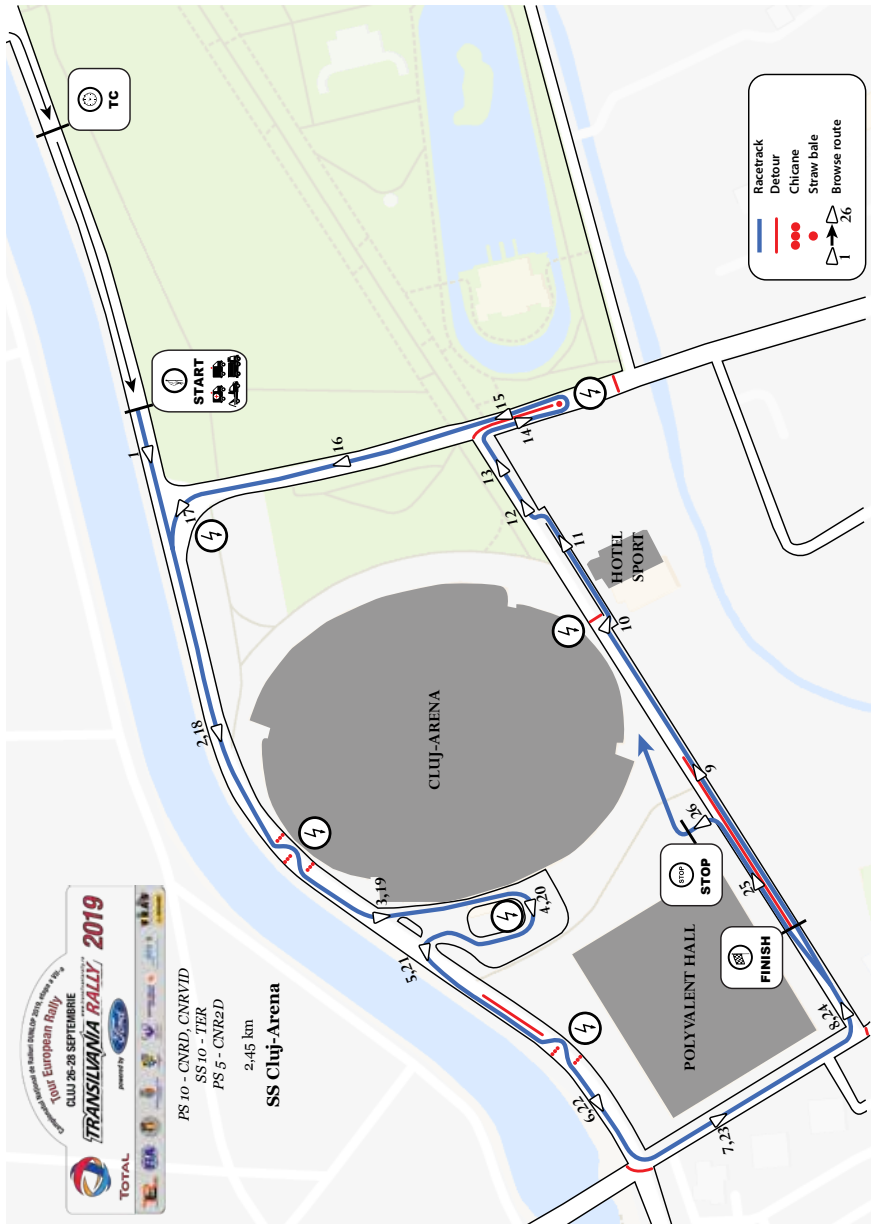
# Appendix V - SHAKEDOWN MAP





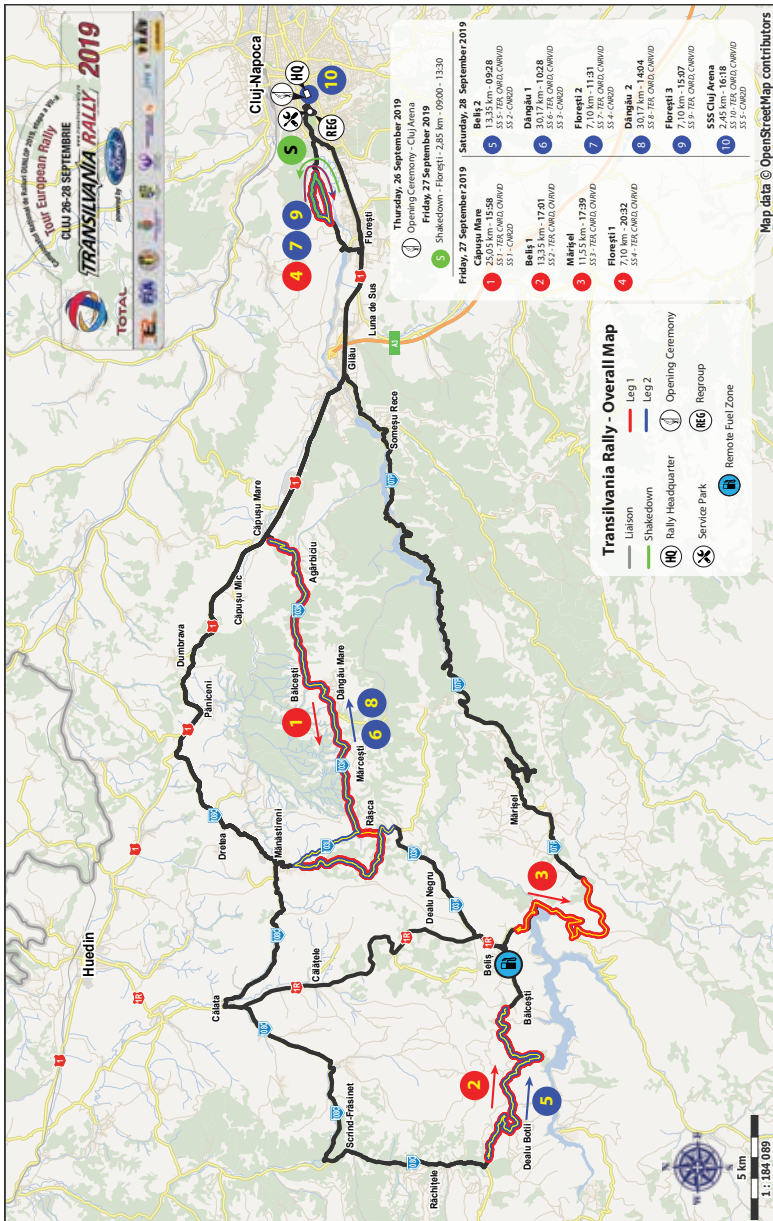


**Appendix VI - SSS CLUJ-ARENA MAP**





## Appendix VII - OVERALL MAP





**Appendix VIII - SHAKEDOWN STATEMENT**

**To Clerk of the Course of Transilvania Rally 2019,  
DECLARATION FORM DRIVER**

Name & first name ..... Date of birth .....  
 City & Country of birth .....  
 Nationality ..... Country of residence .....  
 Address ..... ID card or passport No. ....  
 Mobile number ..... Competition licence number .....  
 I hereby apply for the registration of my Guest Co-Driver,  
 Mr. / Mrs. ....  
 to join me for the Shakedown Stage.

I confirm that I have read and understood the provisions of the FIA's International Sporting Code and the 2019 FIA-RRSR, as well as on the 2019 FRAS Regulations and that I have informed my Guest Co-Driver upon those. I agree to be bound by them (as supplemented or amended) and furthermore I agree on my own behalf and on behalf of everyone associated with my participation, to be held responsible for all material and juridical matters concerning participation fees, losses, claims or eventual damages to third parties. I declare that I have examined this Registration Form and that the information given is true, correct and complete.

Driver ..... (Full name)  
 Signature .....

**DECLARATION FORM Guest Co-Driver**

Name & first name ..... Date of birth .....  
 City & Country of birth .....  
 Nationality ..... Country of residence .....  
 Address ..... ID card or passport No. ....  
 Mobile number .....

I hereby confirm that I have been informed and that I have understood all matters concerning the eventual risk to whom I expose myself by attending this tour. I also declare that I am willing to respect the pilot's requests. In case of any incident, I have no moral or material request towards FIA or the Romanian Automobile Federation, or towards the Organizer of the present at Transilvania Rally 2019 or the driving pilot. I declare that I have examined this Registration Form and that the information given is true, correct and complete.

Guest ..... (Full name)  
 Signature .....

*According to the Regulation 2016/679 / EU on the protection of personal data, we have the request to express the AGREEMENT ON THE PROCESSING OF PERSONAL DATA by FIA, FRAS and the ORGANIZER, by signing this application.*

**Attached: ID or Passport Copy**

**Deadline: Thursday, 26 September 2019, 17:00**