



# Telekom Sport Transilvania Rally 2018 powered by FORD SUPPLEMENTARY REGULATION

TER Tour European Rally 2018 - First stage

National Rally Championship Dunlop 2018 - Second stage

National Historic Rally Championship Dunlop 2018 - Second stage

National Rally 2 Championship Dunlop 2018 - Second stage

FIA Organizer viza: RO 011 / 03.04.2018

FRAS Organizer licence: 11 / 14.02.2018

FRAS Organizer viza: 13 / 14.02.2018



## CONTENTS

1. INTRODUCTION	3
2. ORGANIZATION	4
3. PROGRAMME	8
4. ENTRIES	10
5. INSURANCE	15
6. ADVERTISING AND IDENTIFICATION	15
7. TYRES	16
8. FUEL	19
9. RECONNAISSANCE	19
10. ADMINISTRATIVE CHECKS	22
11. SCRUTINEERING, SEALING AND MARKING	23
12. OTHER PROCEDURES	24
13. IDENTIFICATION OF OFFICIALS	32
14. PRIZE GIVING CEREMONY	33
15. FINAL CHECKS	33
<i>Appendix I - ITINERARY</i>	35
<i>Appendix II - RECONNAISSANCE SCHEDULE</i>	37
<i>Appendix III - COMPETITOR'S RELATION OFFICER</i>	38
<i>Appendix IV - COMPETITION NUMBER AND ADVERTISING</i>	39
<i>Appendix V - SHAKEDOWN MAP</i>	40
<i>Appendix VI - SSS CLUJ-ARENA MAP</i>	41
<i>Appendix VII - OVERALL MAP</i>	42
<i>Appendix VIII - SHAKEDOWN DISCLAIMER</i>	43



## 1. INTRODUCTION

All parts of this regulation mentioned in **blue** colour are applicable for national classes 2-12 CNRD / CNRVID / CNR2D and are subject for approval by the FRAS only.

Telekom Sport Transilvania Rally 2018 powered by FORD is organized and will be run in compliance these Supplementary Regulation, [with the Regulations of the FRAS National Rally Championship Dunlop 2018](#), [with the Regulations of the FRAS National Historic Championship Dunlop 2018](#), [Regulations of the FRAS National Rally 2 Championship Dunlop 2018](#), [with the Regulation of the FRAS for Competition Organizers 2018](#), with the 2018 TER Tour European Rally Regulation, with the FIA 2018 International Sporting Code and with the 2087 FIA Regional Rally Sporting Regulations.

Any modification and / or change to these Supplementary Regulations will be made only by numbered and dated Bulletins, issued by the Organizer (with FIA / [FRAS](#) approval), the Stewards or the Clerk of the Course.

Additional information will be published in the Rally Guide.

FIA Regulations can be downloaded from [www.fia.com](http://www.fia.com).

TER Regulations can be downloaded from [www.terseries.com](http://www.terseries.com).

[FRAS Regulations can be downloaded from www.fras.ro](#).

**Place and date:** Cluj, 4 - 5 May 2018.

### 1.1 Surface:

TER, [CNRD](#), [CNRVID](#): Tarmac 100%;

[CNR2D](#): Tarmac 100%.

### 1.2 Distances:

**TER, [CNRD](#), [CNRVID](#):**

Total distance of rally: 541,74 km;

Total number of stages: 14 (8 different, including SS Cluj Arena);

Total distance of special stages: 158,02 km;

Special stages percentage: 29,17%;

Number of Superspecial Stages: 1;

Number of sections: 6;

Number of days: 2.

### [CNR2](#)

[Total distance of rally: 348,95 km;](#)



Total number of stages: 8 (6 different, including SS Cluj Arena);  
Total distance of special stages: 75,25 km;  
Special stages percentage: 21,56%;  
Number of Superspecial Stages: 1;  
Number of sections: 4;  
Number of days: 1.

## 2. ORGANIZATION

### 2.1 The rally counts for the following championships:

- TER Tour European Rally – First stage;
- National Rally Championship Dunlop 2018 – Second stage;
- National Istoric Rally Championship Dunlop 2018 – Second stage;
- National Rally 2 Championship Dunlop 2018 – Second stage.

### 2.2 Organizer license:

**FRAS: 11 / 14.02.2018**

### 2.3 Organizer viza number:

**FIA: RO 011 / 03.04.2018**

**FRAS: 13 / 14.02.2018**

### 2.4 Organizing club/Contact details:

#### **Motorhome Napoca Rally Team**

Adress: Cluj-Napoca, 293th Oasului Street

Phone: +40.264 415 808 – int. 111

+40.730 336 182

+40.730 633 904

Fax: +40.264 415 717

Email: [contact@napocarallyacademy.ro](mailto:contact@napocarallyacademy.ro)

Web: [www.transilvaniarally.ro](http://www.transilvaniarally.ro)

### 2.5 Organizing committee:

Emil BOC	Mayor of Cluj-Napoca
Ștefan TARCEA	Deputy of Cluj-Napoca
Alin TIȘE	President of Cluj Country
Horia SULEA	Mayor of Florești
Ioan MORAR	Mayor of Râșca
Ioan CONDOR	Mayor of Mănăstireni
Viorel GHIC	Mayor of Mărișel
Petru UNGUR	Mayor of Mărgău



Viorel MATIȘ  
 Chief Commissioner Adrian MIRON  
 Commissioner Paul GAVRIS  
 Commissioner Dan CRIȘAN  
 Colonel Eugen POP  
 Colonel Eugen TODORUȚ  
 Lt. Col. Ion MOLDOVAN  
 Dr. Cristian URSU  
 Marco TEMPESTINI

Mayor of Beliș  
 Cluj Country Police Inspectorate  
 Cluj Country Road Police  
 Cluj-Napoca Road Police  
 Cluj-Napoca Inspectorate of Country Police  
 Cluj-Napoca Mobile Group of Country Police  
 Cluj Inspectorate for Emergency Situations  
 SMURD Cluj  
 NRA Manager

## 2.6 Stewards of the meeting (TER):

Chairman:	TBA
Steward:	Marius STOEAN (ROU)
Steward:	Sandor BENEDEK (ROU)
Secretary of Stewards:	Alina MARTINIUC (ROU)

## 2.7 FIA Delegates:

FIA Observer:	TBA
ASN delegate:	Ioan OLARU (ROU)

## 2.8 Steward of the meeting (CNRD, CNRVID, CNR2D):

Chairman:	Ciprian BURNAR (ROU)
Steward:	Florin RADU (ROU)
Steward:	Răzvan RAȚIU (ROU)
Secretary of Stewards:	Alina MARTINIUC (ROU)

## 2.9 FRAS Delegates:

FRAS Observer:	Daniel UNGUR (ROU)
FRAS Safety Delegate:	Catalin NICOLAESCU (ROU)
CCA Observer:	Ioan BADIU (ROU)

## 2.10 Officials:

Clerk of the Course:	Adrian FODOR (ROU)
Assistant Clerk of the Course:	Laurențiu OROS (ROU)
TER Organizer / TER Promoter:	Luca GRILLI (IT)
Organizer Director:	Bela STOICA (ROU)
Rally Manager:	Cristian ANDREI (ROU)
Chief Secretary Officer:	Remus STRIAN (ROU)
Technical delegate ACR - FIA:	Alexandru LAZĂR (ROU)



#### FRAS Scrutineering Chief Officer:

Chief Safety Officer:

Chief Route Officer:

Chief Sweeping Car Officer:

Communication Manager:

Timekeeping Officer:

Deputy Timekeeping Officer:

Results Processing Officer:

Press Officer:

PR Manager:

Chief Medical Officer:

TER Competitors Relations Officer:

FRAS Competitors Relations Officer:

Lucian GÎRBACIU (ROU)

Romeo DĂNILĂ (ROU)

Iosif PANCSUR (ROU)

Tamas LANG (ROU)

Liviu TUDOR (ROU)

Ionuț HADĂR (ROU)

Alexandru BÂRLEA (ROU)

Rareș FLORESCU (ROU)

Titus CRĂCIUN (ROU)

Ana Maria PASCARU (ROU)

Dr. Cristian URSU (ROU)

Judith FERENCZ (ROU)

Csaba FERENCZ (ROU)

### 2.11 Rally Headquarter

#### Cluj Arena, Cluj-Napoca

Address: Alea Stadionului No. 2, Cluj-Napoca

Phone: +40.730.336.182 - Monica HĂLMACIU

GPS: 46° 46.105'N, 23° 34.287'E

### 2.12 Official Notice Board:

- Rally Headquarter – Cluj Arena;
- On-line at [www.transilvaniarally.ro](http://www.transilvaniarally.ro).

### 2.13 Park Ferme

#### Cluj-Napoca, Cluj Arena

Inside the Park Ferme, it is mandatory to install an impermeable hydrocarbon resistant foil under every car, on a surface of minimum 1,5 x 2 m, in order to prevent pollution from engine leaks. Any offense will be penalized with a fine of 200 euros, paid to the organizer until Saturday, 5 May 2018, at 21:00.

### 2.14 Service Park

#### Cluj-Napoca Sport Hall

Address: Independentei Street

GPS: 46° 45.984'N, 23° 33.902'E



## 2.15 Regroup

### • Pandurilor Street

GPS: 46° 45.911'N, 23° 33.804'E

### • SUN, Cluj-Napoca

Adress: 1 Decembrie 1918 Boulevard

GPS: 46° 45.786'N, 23° 32.746'E

## 2.16 Refuel

### • Sports Hall Cluj-Napoca (at the exit from the Service Park)

GPS: 46° 46.009'N, 23° 33.970'E

### • Remote Refuel Zone: Beliș

GPS: 46° 40.868'N, 23° 1.807'E

It's allowed refuel in gas stations indicates in Road-Book.

## 2.17 Media Centre:

### Cluj Arena, Cluj-Napoca

Adress: Alea Stadionului no. 2, Cluj-Napoca

Phone: +40.730.199.833 - Titus CRĂCIUN

GPS: 46° 46.105'N, 23° 34.287'E

## 2.18 Auxiliary Park:

### Sun, Cluj-Napoca

Adress: 1 Decembrie 1918 Boulevard

GPS: 46° 45.786'N, 23° 32.746'E



### 3. PROGRAMME

#### 3.1 Before the rally week

Wednesday, 4 April 2018		
Programme	Activity	Location
20:00	Publication of Supplementary Regulations	Website www.transilvaniarally.ro
	Publication of entry forms	
	Opening date for entries	
	Publication of media accreditation forms	
	Publication of Rally Guide 1	

Friday, 27 April 2018		
Programme	Activity	Location
20:00	Closing date for entries	Rally HQ Website www.transilvaniarally.ro
21:00	Publication of entry list	
21:00	Publication of Rally Guide 2	
21:00	Publish the list of accredited media representatives	

#### 3.2 Rally Week

Tuesday, 1 May 2018		
Programme	Activity	Location
	Private tests - details to organizer	
18:00 / 22:00	Rally Headquarter opening hours	Cluj Arena
18:00 / 22:00	Registration for reconnaissance and distribution of materials and documents	Rally HQ
18:00 / 22:00	Distribution of GPS device for the reconnaissance car	Rally HQ
18:00 / 22:00	Administrative checks*	Rally HQ

Wednesday, 2 May 2018		
Programme	Activity	Location
08:00 / 22:00	Rally Headquarter opening hours	Cluj Arena
08:00 / 22:00	Media Center / Credentials opening hours	Cluj Arena
08:00 / 22:00	Registration for reconnaissance and distribution of materials and documents	Rally HQ
08:00 / 22:00	Distribution of GPS device for the reconnaissance car	Rally HQ
08:00 / 22:00	Administrative checks*	Rally HQ
08:00 / 19:00	Reconnaissance	See Appendix II
09:00 / 22:00	Service Park opening hours	Sports Hall Cluj-Napoca
20:00	Welcome cocktail	Chios Social Lounge

Thursday, 3 May 2018		
Programme	Activity	Location
08:00 / 21:00	Rally Headquarter opening hours	Cluj Arena
08:00 / 21:00	Media Center / Credentials opening hours	Cluj Arena
08:00 / 14:00	Registration for reconnaissance and distribution of materials and documents	Rally HQ
08:00 / 14:00	Distribution of GPS device for the reconnaissance car	Rally HQ
08:00 / 14:00	Administrative checks*	Rally HQ
08:00 / 00:00	Reconnaissance	See Appendix II
09:00 / 22:00	Service Park opening hours	Sports Hall Cluj-Napoca
14:00 / 18:30	Scrutineering	Service Park
19:15	Prepare for city demo	Service Park
19:30 / 20:00	Autograph session	Cluj Arena
	Gastronomic TER event	Cluj Arena
	Official photo	Cluj Arena
	Opening ceremony include presentation of the drivers	Cluj Arena

\* Administrative check may be carried out at the registration for reconnaissance and collection of materials





Friday, 4 May 2018		
Programme	Activity	Location
08:00 / 00:30	Rally Headquarter opening hours	Cluj Arena
08:00 / 22:00	Media Center / Credentials opening hours	Cluj Arena
08:00 / 23:30	Service Park opening hours	Sports Hall Cluj-Napoca
08:00 / 09:00	Administrative rechecks	Rally HQ
08:00 / 09:00	Rescrutineering	Service Park
08:00 / 09:00	Registration for reconnaissance and distribution of materials and documents (Only CNR2D)	Rally HQ
08:00 / 09:00	Distribution of GPS device for the reconnaissance car (Only CNR2D)	Rally HQ
08:00 / 09:00	Administrative checks (Only CNR2D)	Rally HQ
08:30 / 09:30	Scrutineering (Only CNR2D)	Service Park
10:00 / 18:00	Reconnaissance (Only CNR2D)	See Appendix II
09:00 / 14:00	Shakedown (TER, CNRD Class 2, 3, 4, 5, 11)	Florești
11:30 / 14:00	Shakedown (CNRD rest of the classes, CNRVID)	Florești
13:00 / 15:00	Shakedown (CNR2D)	Florești
14:00	First Stewards Meeting	Rally HQ
14:30	Publication of start list for LEG 1	Rally HQ
16:00	Rally start - the first car	Service Park
21:53	Finish of LEG 1 - the first car	Park Ferme
00:30	Publication of start list for LEG 2	Rally HQ
Saturday, 5 May 2018		
Programme	Activity	Location
07:30 / 22:15	Rally Headquarter opening hours	Cluj Arena
07:30 / 21:30	Media Center / Credentials opening hours	Cluj Arena
07:00 / 22:00	Service Park opening hours	Sports Hall Cluj-Napoca
07:30	Start of LEG 2 - the first car	Park Ferme
08:56	Rally start - the first car (CNR2D)	Service Park
18:43	Finish of the rally - the first car	Park Ferme
19:44	Finish of the rally - the first car (CNR2D)	Park Ferme
20:30	Final Scrutineering	RMB Inter Auto Ford
21:00	Second Stewards Meeting	Rally HQ
21:45	Publication of provisional classification	Rally HQ
22:15	Publication of final official classification	Rally HQ
22:15	Prize giving ceremony	Casino Cluj-Napoca
22:30	Final press conference	Casino Cluj-Napoca
23:00	After rally party	Chios Social Lounge

Attention! CNR2D may come Thursday, 3 May 2018 for Distribution of materials and documents for reconnaissance and reconnaissance.



## 4. ENTRIES

**4.1 Deadline date for entries:** Friday, 27 April 2018, 20:00.

### 4.2 Enter procedure

Any entry application will be accepted only when fully filled in completed, duly signed and accompanied by the total entry fee. The entry form can be sent by e-mail ([entry@napocarallyacademy.ro](mailto:entry@napocarallyacademy.ro)), but in this case the original entry form duly signed must reach the organizer five days following the closing date (FIA - RRSR Art. 21.2).

The Payment of the entry fees will only be accepted by bank transfer. For foreign competitors, drivers and co-drivers authorization must be given by their ASN and original has to be presented at the Administrative Check. In case the competitor is not one of the drivers, the entry form must be accompanied by a copy of the valid competitors' licence.

For entries in national classes, a specific entry form will be used. Entrants participating in both TER and CNRD will pay only the CNRD entry fee, but they will fill-in both entry forms. Add fee for one event licence by ASN.

**4.3 Number of competitors accepted:** 100

### 4.4 Eligible cars:

Tour European Rally Classes (FIA licenced)	
RC2	S2000-Rally: 1.6T engine with a 28 mm restrictor S2000-Rally: 2.0 Atmospheric Group R5 (VR5) Group N over 2000cc (former N4)
RGT	Group RGT cars
RC3	Group A over 1600cc up to 2000cc Super 1600 R2C (atmo over 1600cc up to 2000cc - VR2C & turbo over 1067cc & up to 1333cc - VRC2) R3 (atmo over 1600cc up to 2000cc - VR3C & turbo over 1067cc & up to 1333cc - VRC3) R3 (turbo/ up to 1620cc / nominal VR3T) R3 (diesel up to 2000cc / nominal VR3D)
RC4	Group A up tp 1600cc R2 (atmo over 1390cc up to 1600cc VR2B & turbo over 927cc & up to 1067cc - VR2B) Kit Car up to 1600cc Group N over 1600cc up to 2000



RC5	Group N up to 1600cc R1 (normal aspirated up to 1600cc - VR1A/VR1B & turbo up to 1067cc – VR1A/VR1B)
-----	---

### IMPORTANT

**Competitors participating in both TER and CNRD must comply with FIA - RRSR 2018 Art. 4 (ELIGIBLE CARS).**

Romanian Rally Championship Classes (FRAS licenced)	
2 (RC2)	S2000-Rally: 1.6 Turbo engine with a 28 mm restrictor S2000-Rally: 2.0 Atmospherically aspirated Group R4 Group R5
3 (RC2)	Group N over 2000cc (ex-N4) Group N+ national homologation
4	RGT cars
5/6 (RC3)	Group A over 1600cc and up to 2000cc Super 1600 R2C (atmo over 1600cc up to 2000cc - VR2C & turbo over 1067cc & up to 1333cc – VRC2) R3 (atmo over 1600cc up to 2000cc - VR3C & turbo over 1067cc & up to 1333cc – VRC3) R3 (turbo/ up to 1620cc / nominal VR3T) R3 (diesel up to 2000cc / nominal VR3D)
7/8 (RC4)	Group A up to 1600cc R2 (atmo over 1390cc up to 1600cc VR2B & turbo over 927cc & up to 1067cc – VR2B) Kit Car up to 1600cc Group N over 1600cc up to 2000
9/10 (RC5)	Group N up to 1600cc R1 (normal aspirated up to 1600cc - VR1A/VR1B & turbo up to 1067cc – VR1A/VR1B) R1A – up to 1400cc
11	Group H – 4WD cars
12	Group H – 2WD cars
National Istoric Rally Championship Classes (FRAS licenced)	
I2	Under 1600cc
I3	Over 1600cc



National Rally2 Championship Classes (FRAS licenced)	
A1	2WD - under 1600cc
A2	2WD - over 1600cc
A3	Class 9 / CNRD
B	4WD
I	Istoric

Tour European Rally classes and national classes will be shown in separated entry list, classifications (official or unofficial) and / or joined results of the Special Stages during or after the event (Art. 4.4.5 of the FIA-RRSR).

Additional provisions about national classes can be found in CNRD 2018 Regulations.

#### 4.5 Entry fees:

##### 4.5.1 Quantum:

###### Crew:

- 300 euro / crew for cars of classes RC2-RC5 (TER Tour European Rally);
- 300 euro / crew for cars of classes 2-7/8, 11, except juniors (include quantum TER);
- 300 euro / crew CNRVID;
- 200 euro / crew for cars of classes 9, 10, 12, Manufacturer cup (include quantum TER);
- 200 euro / crew for junior drivers (over 18 years old);
- Free for junior drivers (under 18 years old);
- 200 euro / crew for Group B, CNR2D;
- 130 euro / crew for the rest of the classes, CNR2D.

###### Teams:

- 100 euro for three crews team CNRD;
- 200 euro for four crews team CNRD;
- 250 euro for five crews team CNRD;
- 50 euro for team CNR2D;

###### Shakedown entry fee:

- 50 euro for TER, CNRD, CNRVID;
- 30 euro for CNR2D.

For CNRD crews wishing to participate in the TER, the entry fee of CNRD also includes the TER registration fee. At the registration fee, will be added a licence fee to ASN (310 RON



+ 100 RON for individual competitors or 200 RON for legal entities). The ASN license also applies to the remaining ERT / CNRD stages.

**Note:**

The latest day for payment of the entry fees is the closing date (Acc. to Art. 4.1) otherwise the entry shall not be accepted. The payments will be done only in RON, at the exchange rate published by RBN on the date of payment.

**4.5.2 Payment details:**

Crew and team entry fees shall be paid at the same time with the general entry fee, in Motorhome Napoca Rally Team account: **RO19 BTRL RONC RT00 8667 5702 (RON)**, **RO66 BTRL EURC RT00 8667 5702 (EUR)** opened at Transilvania Bank.

In the bank document will specify the crew car number for which the payment is made and the full name of the pilot.

The deadline for banking document date is Friday, 27 April 2018.

Shakedown fee, if participation was mentioned in the entry form, but it was not paid together with the entry fee, shall be paid at the Rally HQ when entering the reconnaissance, deadline being Thursday, 3 May 2018, 14:00.

**4.5.3 Entry requests sent after the deadline as per art.4.1 are accepted with an increase of 20% of the entry fee, deadline being Wednesday, 3 May 2018, 13:00.**

**4.5.4** The increased entry fee as per art.4.5.3 and the Shakedown fee shall be only paid upon reconnaissance entries, and the release of technical documentation and entry reconnaissance shall be done only against all fees paid in organizer's account.



**4.5.5** The team entry fee, if it has not been paid, must be paid by Thursday, 3 May 2018 at 14:00.

## 4.6 Entry packages

### 4.6.1 Standard package

	TER	CNRD	CNR2D	CNRIVD
Service Park surface	50 m <sup>2</sup>	40 m <sup>2</sup>	40 m <sup>2</sup>	40 m <sup>2</sup>
Car inscriptions				
• Reconnaissance No.	2	2	2	2
• Event logo with car No.	1	1	1	1
• Mandatory advertising of the organizer	4	4	4	4
Documents				
• Supplementary Regulation	1	website <a href="http://www.transilvaniarally.ro">www.transilvaniarally.ro</a>		
• Road Book	1	1	1	1
• Rally Guide	website <a href="http://www.transilvaniarally.ro">www.transilvaniarally.ro</a>			
• Auxiliary Road Book	1	1	1	1
Badges				
• Crew	2	2	2	2
• Team Manager	1	1	1	1

### 4.6.2 Additional materials

Additional materials can be ordered by mail ([contact@napocarallyacademy.ro](mailto:contact@napocarallyacademy.ro)) until Friday, 27 April 2018 and will be provided against the following additional fees:

- Car inscriptions – 10 euro / pcs.
- Road Book – 10 euro / pcs.
- Extra space in the Service Park – 10 euro / m<sup>2</sup>.

## 4.7 Entry fee is refunded:

- 50 % to the crews which, for reasons of „force majeure” (duly certified by ASN/FRAS), are in impossibility to start in the rally;
- 75% to the competitors with unvalid applications;
- 100 % To candidates whose entry has not been accepted;
- 100 % In the case of the rally not taking place.



## 5. INSURANCE

**5.1** The entry fees included in the entry guarantees to the competitor full civil liability towards third parties. The competitors will be insured on all special stages by an insurance of civil liability against third party of 650.000 RON (aprox. 150.000 euro) indemnity, made by the organizer.

**5.2** This insurance will be concluded for all people within the rally organization (referees, children, journalists, photographers, and foreign pilots), demanding that there is no other casualty insurance concluded by a local or foreign insurance company.

**5.3** The Insurance is mandatory and it will not overlap, substitute or prejudice any personal or individual insurance held by a competitor or by any person or limited liability company participating at the event.

**5.4** Servicing vehicles and cars used for reconnaissance, even those carrying special plates issued by organizers or ASN / [FRAS](#), are not covered by the rally insurance policy and remain the responsibility of the owners.

## 6. ADVERTISING AND IDENTIFICATION

**6.1** Mandatory Organizer's advertising is: „Telekom Sport Transilvania Rally 2018 powered by FORD”.

**6.2** The Organizer will provide each crew with the number of identification, Rally Plates, mandatory and optional Advertising (when applicable), which must be affixed to their car prior Scrutineering, as specified in the Appendix IV to these supplementary regulations.

**6.3** [FRAS mandatory advertising will be in according to Art. 18 CNRD 2018 Regulation.](#)

**6.4** Advertising for rally teams partners at Telekom Sport Transilvania Rally 2018 powered by Ford:

**6.4.1** All the crews entered at Telekom Sport Transilvania Rally 2018 powered by Ford are allowed to organize sports advertising, (tents, branding, sampling, hostesses, autograph sessions, etc.) only in the assigned area in Service Park. Rally locations: Start/Finish area, Prize-giving ceremony, press conference room, VIP area, Start of Superspecial Stage, are exclusively locations for Organizer's partners. The crews may carry out advertising activities



in these areas only with the written acceptance of the Organizer. Otherwise, the organizer shall sanction the team with 1.000 Euro fine.

**6.4.2** Promoting crew's partners by commercial advertising, (direct advertising, product presentation, services, offers etc.) without Organizer's written acceptance (contract), will be interpreted as forbidden advertising and will be sanctioned by the Organizer with entry cancellation from Telekom Sport Transilvania Rally 2018 powered by FORD, without refunding of the entry fee.

## 7. TYRES

At Telekom Sport Transilvania Rally 2018 powered by FORD only tarmac tyres are allowed.

The tyres must comply with Art. 60 and Annex V of the FIA - RSRR 2018.

### 7.1 Tyres marking / barcode

Tire marking / barcode is mandatory for all participants in the Telekom Sport Transilvania Rally 2018 powered by FORD. During the rally, the procedures will be as follows:

A tyre marking / barcode reading zone may be established at the exit of the Service Park. The crew has to stop its car and wait for the instructions of the scrutineers and/or marshal. A tyre mark checking zone may be established at the entrance of the authorised service parks and remote service zones.

### 7.2 Control means

Controls may be carried out at any time during the rally, for checking the conformity of the tyres.

### 7.3 Spare tyres

Each entering car is allowed to carry on board two spare wheels, properly fixed.

### 7.4 Start delays

The adjustment of tyre pressure is allowed:

- If the start of a special stage is delayed by more than 10 minutes;
- In regroupings of more than 10 minutes, if the regroup is followed by a special stage.

**7.5** It is allowed to change the tire footprint (hand cutting), respecting specifications given by the manufacturer.





## Michelin Tyres

### PLAN DE RETAILLAGE PILOT SPORT R

Retailage Pilot



Retailage Maxi Pilot



## Hankook Tyres

Re-cut guide

All rounded corners rally law

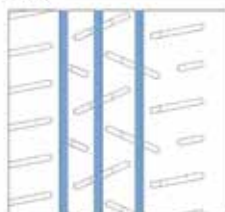


Figure 1

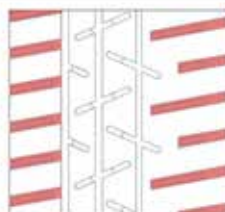


Figure 2

To improve lateral grip and hydroplaning, refer to Figure 1  
To improve traction, refer to Figure 2

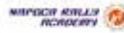
Depth : 5.0mm Width : 9.0mm

A specially FIA homologated rally tyre pattern (2018) for dry it is not allowed to re-cut to improve the performance.

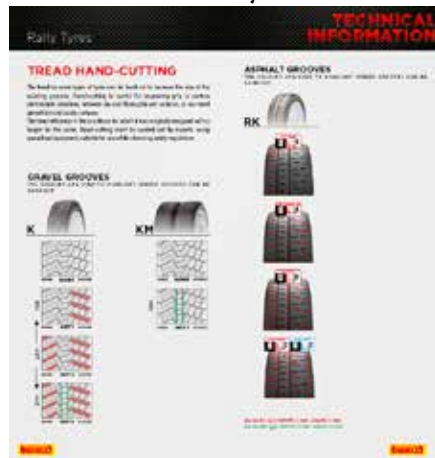
The guide is the only reference when re-cut is allowed in your country.

VERITAS Z205

HANKOOK



## Pirelli Tyres



### 7.6 Sanctions

Any breach of the tyre regulations will be reported to the stewards, who may impose sanctions.

### 7.7 Number of tyres

	RC2, RGT, 2, 3, 4 Classes	The rest of the classes
TER / CNRD	12	10 tyres (RC3, RC4, 5, 7 Classes)
		8 tyres (Clasa RC5, 9 Classes)
CNR2D		Free
CNRVID		Free

Tyres used during Shakedown will not be marked or accounted for in any way. They tyres are free.

Class 11 and 12 competitions do not have any type, brand, and number restrictions tyres used in CNRD 2018. Tires will not be accounted for in any way.



## 8. FUEL

### 8.1 Locations

#### • Refuel zone:

At the exit of the Service Park.

GPS: 46° 46.009'N, 23° 33.970'E

#### • Remote refuel zone:

Beliş

GPS: 46° 40.868'N, 23° 1.807'E

### 8.2 Refueling from commercial stations (Art 58.3 FIA-RRSR)

Will be indicated commercial stations in Road-Book. Competitors can feed commercially available fuel at Roadbook marked petrol stations. Crews can only feed on fuel from pumps, using only onboard equipment and no physical outside aid. Help from others is forbidden.

8.3 Exclusively for the purpose of attending the refueling procedure of a motor vehicle, two crew members identified by reflective vests may be present within the refuel area.

8.4 The fuel used must comply with the prescriptions of Appendix J (Art. 252-9) of the C.S.I.-FIA for all participants in the TER Tour European Rally.

## 9. RECONNAISSANCE

### 9.1 Reconnaissance entry

Before the start of reconnaissance, competitors wishing to make reconnaissance are required to register for reconnaissance (in Acc with Art. 3 or on-line), and collect the documentation provided by the organizer.

It is permissible to register the second reconnaissance vehicle, with the obligation to notify the organizer of this change.

### 9.2 Schedule

Reconnaissance for all drivers will be conducted according to the schedule in Appendix II to this Supplementary Regulation. Participation at reconnaissance is not compulsory.

### 9.3 Reconnaissance cards

No Reconnaissance cards will be used. At each start and stop of the Special Stage, the pilot or co-pilot will sign of the referee's file.



## **9.4 Reconnaissance progress**

**9.4.1** The organizer provide the crews the stickers with the number of reconnaissance, to be affixed to the windscreen, on the side of the co-driver and on the rear window, on the side pilot. These numbers must be visible throughout the duration of the reconnaissance.

**9.4.2** Passing competitors on special stages from the date of publication of this Supplementary Regulation and up to the beginning of reconnaissance, is considered to be a breach of a recognition program.

**9.4.3** Competitors who, due to the nature of the occupation, will be required to pass the special stages have the obligation to announce the organizer.

**9.4.4** The presence of the pilot or co-pilot on a special stage in any form is considered reconnaissance.

**9.4.5** In cases where in the reconnaissance car is a member of other teams enrolled in the rally, it is obligation to register in the job file, as requested by the referees.

## **9.5 Restrictions**

**9.5.1** Speed limits of during the entire reconnaissance session, the competitors must comply with rules and regulations of Romanian Road Code and legislation in force, and on the special stages not to exceed the speed of 70 km/h, in areas where no other speed limit are signaled by signposts. A tolerance of 10 km/h is allowed.

**9.5.2** Number of passes per each special stange and direction: Each crew will perform a maximum of 2 passes during the reconnaissance.

**9.5.3** Subject to strict adherence to the rules imposed by the Road Code and strict GPS tracking, it is approved to return to the same route sector at the start of the Tarnița Special Probe for the second pass of reconnaissance. For the other special stages is strictly forbidden to return.

## **9.6 Supervision, Sanctions**

**9.6.1** "T.E.L.L Security System", a FRAS partner company, will provide a GPS system to the coach (rent) for a sum of EUR 20 for TER, CNRD, CNRVID, and [EUR 10 for CNR2D](#), a sum to be paid, obligatory for the taking of documents. It is the competitor's obligation



to mount the GPS system on the reconnaissance car. It must be connected to the cigarette lighter throughout the reconnaissance process. Damage or loss of the system will incur a fine of 200 euros. Any malfunctioning of the GPS system from receiving it to its surrender, found to be due to the competitor's fault, will be penalized with a fine of up to 200 Euro and immediately brought to the attention of the Sports Director.

The following offenses will be penalized:

- Voluntarily stopping a GPS (unplugging the lighter);
- Other actions affecting it that affect the transmission of data.

#### **9.6.2 GPS used during the rally**

Competitors who have not installed the GPS system on the competition car will be fitted with this system by TELL employees in the service park.

#### **IMPORTANT!**

Suspension of data transmission during the contest may be interpreted as a FORBIDDEN SERVICE because competitors can not be monitored for compliance with the Road Book.

Any interference with the GPS system will be detected and recorded.

Any fine will have to be paid to the FRAS representative as soon as the competitor has been informed and until the next stewards meeting.

#### **9.6.3 GPS used at reconnaissance**

Competitors licensed for one event will teach the GPS on the TELL representative's car at the Rally HQ until Saturday, May 5, 2018 at 22:00.

Retired competitors will hand over the TELL representative's GPS at the Rally HQ until Saturday, May 5, 2018 at 20:00.

The rest of the competitors will teach GPS in the Park Ferme.

Loss, damage, or non-return of the GPS system is sanctioned by a fine of 200 euro.

**9.6.4** The speed and the number of passages on each stage will be monitored by the GPS device (Safety Tracking System) installed on the reconnaissance car.



**9.6.5** Failure of the number of passes on special samples shall be sanctioned as follows:

- First deviation - fine 100 euro;
- Second deviation - a fine of 200 euro.

**9.6.6** Speed exceeding will be sanctioned with:

- 25 euro for speeding comprised between 10 and 20. In this case speeding must be longer than 10 seconds;
- 50 euro for speeding over 20 km / hour;
- 100 euro for speeding over 50 km / hour;
- Other sanctions may be applied by the Clerk of the Course.

The fines are paid to the FRAS representative, at the Rally HQ, until the first stewards meeting under the sanction of the refusal to start. For the second or for the following fines, their amount is doubled.

## 10. ADMINISTRATIVE CHECKS

### 10.1 Location:

Rally HQ

**Cluj Arena, Cluj-Napoca**

Address: Alea Stadionului No. 2, Cluj-Napoca

GPS: 46° 46.105'N, 23° 34.287'E

### 10.2 Schedule: (see art. 3. Schedule)

See Art. 3 - Schedule. All crews, including forlighters (000, 00, 0) are required to perform administrative checks.

### 10.3 Documents:

The following documents are mandatory for competitors enrolled in the TER and must be submitted during administrative checks:

- Competitor (if not the pilot or co-pilot);
- FIA / FRAS driver and co-driver licenses;
- Passport / ID;
- Valid driving licenses of driver and co-driver (where applicable);
- For foreign crews – authorization issued by their ASN;
- Registration certificate of the rally car including the valid Periodic Technical Inspection;
- Third party civil liability car insurance (RCA incl. Green Card);
- Car Owner authorisation to participate in the rally (if the car is not driver's property);
- Entry form duly filled in and signed;



For other competitors (except for competitors who are presented for the first time at a CNRD stage, CNRVID, CNR2D in 2018), it is sufficient to present the pilot / co-pilot driving licenses and the RCA of the competition car. The application form must be signed by the pilot and co-pilot.

Subsequently, only the documents that no longer correspond to the first administrative check will be presented in the next steps. The driving license and RCA of the competition car are mandatory to be presented.

**10.4** Request for postponing the Administrative Checks is accepted against a fee of 20 euro. If the postponement also involves a postponement of the initial (or off-program) technical verification, the amount is 220 euro for TER, CNRD and CNRVID, and 110 euro for CNR2D.

## **11. SCRUTINEERING, SEALING AND MARKING**

### **11.1 Location**

#### **Service Park**

#### **Cluj-Napoca Sport Hall**

Adress: Independentei Street

GPS: 46° 45.984'N, 23° 33.902'E

### **11.2 Schedule**

See Art. 3 - Schedule. The organizer will provide detailed programming for the scrutineering.

Failure to fit in time for the scrutineering will be sanctioned with:

- 50 euro for less then 15 minutes delay;
- 75 euro from 15 to 30 minutes delay;
- 150 euro from 30 to 90 minutes delay;
- 200 euro more than 90 minutes and / or other sanction from Clerk of the Course.

The fines will be paid to the FRAS representative, to the Rally HQ, until the first stewards meeting under the refusal to start the competition.

**11.3** Request of postponing the scrutineering is accepted against the payment of a 200 euro fee to TER / CNRD / CNRVID and 100 euro to CNR2D.



#### 11.4 Safety equipment

At scrutineering, competitors must present all items of clothing, including helmets and an FIA approved head retaining device (FHR), intended to be used. Compliance with Appendix L Art. III will be checked.

11.5 Sealing and marking of spare parts will be done at the scrutineering.

### 12. OTHER PROCEDURES

#### 12.1 Shakedown

##### 12.1.1 Competitors:

The crews that requested shakedown entry in the entry form, paid the 50 euro (TER / CNRD / CNRVID) / 30 euro (CNR2D) tax and passed the administrative checks and scrutineering.

12.1.2 **Location:** Florești (See Appendix V Shakedown Map).

##### 12.1.3 Schedule:

See Art. 3 Schedule

12.1.4 Reconnaissance for the shakedown will be by program from Appendix II.

12.1.5 The equipment used by the crew at shakedown must be the same with the one used in rally (suit, helmet, boots, etc.), FIA homologated.

##### 12.1.6 GUESTS

At the shakedown any other person excepting the co-driver who wants to participate at the shakedown, must fill in a disclaimer – Appendix VIII from present Supplementary Regulations, together with an ID copy presented to the marshal at the TC of Shakedown. Presence of a guest inside the rally car without the disclaimer is sanctioned with a fine of 100 euro. The fine will be paid by the crew to the Organizer.

12.1.7 Any private tests in Cluj County during the rally week without organizer's acceptance, excepting Shakedown, will incur 1000 euro fine, payable in Organizer's account. In this respect the organizer will provide a testing session. All the details can be received from Rally HQ/website.

12.1.8 Shakedown assistance vehicles must be mandatory vehicles with a maximum admissible mass of 3.5 t.





---

## 12.2 Service Park

### 12.2.1 Location

**Service Park:** Sports Hall, Cluj-Napoca

**Shakedown Service Park:** See Appendix V - Shakedown Map

### 12.2.2 Surface: Tarmac

### 12.2.3 Schedule

See Art. 3 Schedule

**12.2.4** The teams/crews will leave the Service Park on Sunday, 6 May 2018, 12:00 – the latest.

**12.2.5** The placement of the crews inside the Service Park will be done according to a service plan published at HQ/website and according to organizer's indications . The crews that have service contracts with another service team will specify that in the entry form.

**12.2.6** Every crew will have a 50/40 m<sup>2</sup> available assigned space. Requests for additional space will be specified in the entry form and sent to the organizer before Friday, 27 April 2018, 20:00. Assignment of additional space shall be done subject availability and will be charged with 10 euro / m<sup>2</sup>. The organizer reserves its right to measure and verify the space offered to every crew. Exceeding the assigned space will be charged with 25 euro/ m<sup>2</sup>.

**12.2.7** The speed limit in Service Park is 10 km/h and will be monitored by GPS; exceeding the speed limit will attract 50 euro penalties from stewards (Acc. to FIA – RRSR 2018).

### 12.2.8 Cars allowed in the Service Park:

Only one service car is allowed for each crew. These cars will have to be easily identifiable by the "Service" plate. The rally cars will be unloaded from the platforms or trailers in the auxiliary park. The presence of platforms or trailers inside the Service Park is forbidden. At the main gate of the Service Parc will be a check point for the service and auxiliary cars. Any infringement of these rules will be sanctioned by the organizer as follows:

- 100 euro for the first infringement;
- 200 euro for the next infringements.



---

### 12.2.9 Service Park rules

*Keep your Service area clean and safe!*

Every competitor is responsible for his team's behavior. Inside the Service Park all the competitors must respect the following:

- It is forbidden to fix the tents with bolts or other means that could damage the Service Park surface. The fine for damaging the parking area surface is 200 euro.
- Every Service Car must have a fire extinguisher A,B,C type with a minimum capacity of 5 liters, checked in the last 2 years;
- It is mandatory to install an impermeable hydrocarbon \ resistant foil under every rally car, to prevent pollution from engine leaks, on a surface of minimum 3 x 5 m. The fine for lack of extinguisher or foil under the car shall be sanctioned with a fine of 200 euro.
- Dumping garbage is allowed only at the trash bins and in the container in the Service Park. The fine for storage of garbage in other conditions shall be sanctioned with a fine of 200 euro;
- Changing oil, leaking water or washing the competing car is forbidden inside the Service Park, the fine for this being of 200 euro.

All these fines are paid to the organizer, at the Rally HQ, until Saturday, May 5, 2018, at 22:00.

## 12.3 City Demo & Rally Presentation

### 12.3.1 Schedule

See Art. 3 Schedule

**12.3.2** The presence at the official photo and Rally Presentation is mandatory, and will take place on Cluj-Arena. Absence from event will incur a 50 euro/crew fine.

**12.3.3** The crews must wear the rally overalls or crew official outfit.

## 12.4 Technical zone

**12.4.1** A technical zone, where scrutineers have the possibility to perform checking at the rally cars and safety equipment of the rally crews, shall be organized at the entry of each Service Park.

**12.4.2** In case that the Service Park is preceded by a regroup, the technical zone will be included into the regroup, respectively at the TC 3A, TC 9A, TC 10A, TC 13A.



**12.4.3** As it is specified at art. 12.4.2, the crew members must stay 3 minutes nearby the rally car after entering the regroup, with the purpose of supervising the technical checks.

## **12.5 Special Stage start Procedures**

At the start of each special test there will be a digital LED display showing the hour, minute, second and two green and red LED matrices. The display will be connected to a GPS / GSM equipment with a satellite connection to synchronize all time equipment on the special samples. Thus, by connecting the equipment tutor to the same satellite, avoid any time differences between the devices.

The connection to the GSM network is necessary for the transmission of time to the Secretariat. The clock will work in normal (chronological) order until the minute is fulfilled. The transmission of time is valid as long as there is a GSM signal instead of the positioning of the stations. After the start / arrival of any competitor, the time recorded by the cronoprinter will be sent to the Secretariat's Computing Center for verification and display on the rally site / FRAS site.

If the competitor's start is after the second second of the minute, the clock will indicate the green color for 20 seconds. If a car can not start from the starting line within 20 seconds of the completed minute, it will be excluded and immediately repositioned in a safe place.

The ideal start time (actual minute) and the actual start time of the competitor will be printed on the chronoprinter's bands, so if a competitor anticipates the start before the second of the second minute, this will be visible to the referee in the Start position and beyond, by the Secretariat's Computing Center.

An optical start detection system (photocells) will be located 40 cm beyond the starting line.

Should the electronic start system fail, the start will be given as specified in the Art. 37.3 of the FIA RRSR.

## **12.6 Superspecial Stage Procedures**

**12.6.1 Location:** Cluj Arena, Cluj-Napoca, see Appendix VI - SSS Cluj-Arena Map.

### **12.6.2 Characteristic:**

- Length: 2,60 km;
- Laps: 2;
- Surface: tarmac.

**12.6.3** The competitors will check in at TC 14 (TER / CNRD / CNRVID) / TC 8 (CNR2D), and wait the start at SSS 14 / SSS 8, at marshal's indications.

The start equipment is made by Tag Heuer (Fig.1).



Fig. 1

The start will be given by the indications of the start marshal who will trigger the countdown on the clock starting with the fifteenth (15) second (Fig.2).



Fig. 2

The moment in which the clock will get by the second 00 is showing the ideal start time of the competitor which is positioned by the start line (Fig.3).



Fig. 3



The minute written in the time card for calculating the liaison time is the next after the effective start minute. The stop control marshall will write this time in the time card. In case of unexpected events after the trigger of the countdown, the start marshall will stop the count, meaning that it will be postponed for the competitor located by the start line. The procedure will be resumed at a later time.

The effective stage time will be calculated after the formula: finish time – ideal start time (second 00).

**12.6.4** SSS 14 / [SSS 8](#) is considered completed if the route from Appendix VI - SSS Cluj-Arena Map is entirely passed as per Road Book. Start time will be completed in STOP SSS 14/ [SSS 8](#).

On the SSS Cluj-Arena route will be mounted a straw bait with a minimum weight of 400 kg. Competitors must turn around 180 degrees around the straw bait. (See Appendix VI - SSS Cluj-Arena Map, detail 6)

- In case of cutting the SUPERSPECIAL with the intention of shortening the route for gaining time, the crew will be given the slowest time achieved by a crew of its class / group plus a penalty of 10 seconds;
- In case that the crew accidentally goes off the road, without being possible to prove the intention of shortening or creating an advantage, and enters the stage as soon as possible, it will be considered as a normal rally incident, and the crew will not be penalized;
- In case that a crew does not complete all the laps, it will be given the slowest time achieved by a crew of its class / group plus a penalty of 10 seconds;
- In the event of failure to comply with any of the landmarks in Annex VI - SSS Cluj-Arena Map (entrance to Sport Hotel parking - detail 6, turning around the straw bait - detail 6, entrance to the Cluj-Arena parking lot - detail 3) the crew will be given the slowest time achieved by a crew of its class / group plus a penalty of 10 seconds;
- In case of a car fails to complete the SUPERSPECIAL from technical reasons is considered abandoned.

**12.6.5** Red flag will be used during the Super Special Stage and will be strictly respected. Red flag means stop immediately.

## **12.7 SS Floresti Procedures**

The competitors will check in at TC 4 / TC 9 / TC 10 (TER / CNRD / CNRVID) / [TC 5 \(CNR2D\)](#), and wait the start at SS 4 / SS 9 / SS 10 / [SS 5](#), at marshal's indications.

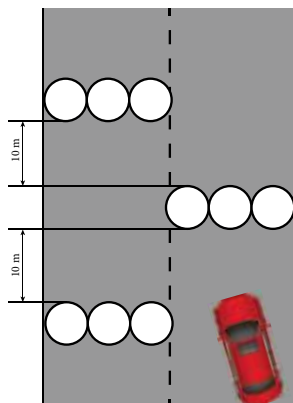
The starting procedure is the same as that mentioned in Art. 12.6.3 of these Supplementary Regulations.

## 12.8 Chicanes

**12.8.1** As a safety measure, chicanes will be placed on the next stages:

SS 4 / SS 9 / SS10 (TER / [CNRD / CNRVID](#)) / [SS 5 \(CNR2D\)](#) Florești – at km 3,52 / 4,25 and  
SSS 14 (TER / [CNRD / CNRVID](#)) / [SS 8 \(CNR2D\)](#) – SSS Cluj-Arena (see Appendix VI - SSS Cluj-Arena Map)

**12.8.2** The chicanes are made of circular straw bales with a minimum weight of 400 kg, placed as in Pic. 12.8, beginning with the centerline of the road with 10 meters distance between rows.



### 12.8.3 Penalties for chicanes *Fig. 12.8*

- Move barrier (the movement must be significant): 3 seconds;
- Pass through barrier: 6 seconds;
- Pass through two or more barriers: 10 seconds;
- In case of the intention of shortening the route for gaining time passing through chicanes, the crew will be given the slowest time achieved by a crew of its class / group plus a penalty of 10 seconds.

**Judge of facts (nominated by a later bulletin) will register the penalties at chicanes.**



## 12.9 Start order

### • Day one:

- FIA priority drivers;
- TER Tour European Rally;
- FRAS priority drivers according to CNRD 2018 standings (after one round);
- Classes 2 – 10 drivers, according to CNRD 2018 standings (after one round), and starting with 10<sup>th</sup> place down, the cars of class 11 – 12 interspersed among the cars of class 2 – 10, according to class 11 – 12 CNRD 2018 standings;
- CNRVID drivers according to CNRVID 2018 standings (after one round);
- CNR2D drivers according to CNR2D 2018 standings (after one round).
  - For the day two of the rally, the start order will be according to the provisional classification from day one (TER / FRAS), with the amendment that from 10<sup>th</sup> place down, the cars from class 11-12 will be interspersed on start order among the FIA classes and at the end CNRVID and CNR2D classes.

### IMPORTANT!

The start and exit time of the CNR2D registers is informative and changes depending on the number of registered competitors or abandonment of TER, CNRD and CNRVID.

It is the obligation of competitors to inform the official in the time zone where they are going to pontificate (or raise their checkbook) on the ideal time of reckoning.

## 12.10 Power Stage

Power Stage is SS 13 Dângău 2 (12,00 km) TER / CNRD / CNRVID

Power Stage is SS 7 Dângău 2 (12,00 km) CNR2D

## 12.11 Rally finish

Prize giving for General Classification will be in Esplanade from Cluj-Arena.

Rally finish is in TC 14A (TER / CNRD / CNRVID) and TC 8A (CNR2D) and the crews park inside the finish Park Ferme.

## 12.12 Check-in in advance

The crews can check-in in advance without being penalized at the next time controls:

- TC 4A (TER / CNRD / CNRVID) - Park Ferme in (LEG 1 Finish)



- TC 14A (TER / [CNRD](#) / [CNRVID](#)) / TC 8A ([CNR2D](#)) – Rally finish

### 12.13 Handing / Changing the time cards

Handing / Changing the time cards will be done at time controls points:

TC: 0, 3B, 4A, 4B, 9B, 10B, 13B, 14A (TER / [CNRD](#) / [CNRVID](#))

[TC: 0, 4B, 5B, 8A\(CNR2D\)](#)

### 12.14 Official time

The official time of the rally, is GPS time for Romania.

### 12.15 Start gap:

The start gap between two crews is 1 minute.

### 12.16 Restart after retirement / Super Rally (Rally2)

The crews that abandon in the first rally day, may resume the rally in the second day, as is specified in Art. 46 / 46.1 from FIA – RRSR 2018 and [CNRD 2018 Regulations](#). In this respect, it is mandatory to inform the Clerk of Course. Any crew which has failed to complete a Leg can re-start the rally from the start of the next Leg only if they confirm their intention to the Clerk of the Course one hour prior the publication of the start list of the subsequent Leg.

### 12.17 Emergency number

**+40.745.039.736 - Bela STOICA**

## 13. IDENTIFICATION OF OFFICIALS

The Officials and Marshals of the event will be identified by colored tabards according FIA - RRSR 2018 Appendix III, Art. 5.2.6.





## 14. PRIZE GIVING CEREMONY

**14.1** For all the crews that finished the rally, it is mandatory to take part in prize giving ceremony Acc. with Art 3 Schedule.

**14.2** The first three places from the next standings will be awarded:

- Tour European Rally General classification;
- Tour European Rally TER2 Cup classification;
- Tour European Rally TER Productions classification;
- Tour European Rally 2WD classification;
- [FRAS CNRD General classification \(2-10 classes\);](#)
- [FRAS CNRD OPEN classification;](#)
- [FRAS CNRD Classes classification;](#)
- [FRAS CNRD Teams classification;](#)
- [FRAS CNRD Junior classification;](#)
- [FRAS CNRD Rookies classification;](#)
- [FRAS CNRD Manufacturer classification;](#)
- [FRAS CNRD Two wheels drive classification \(2WFD\);](#)
- [FRAS CNRD Two wheels drive classification \(2WRD\);](#)
- [FRAS CNR2D OPEN classification;](#)
- [FRAS CNR2D Groups classification;](#)
- [FRAS CNR2D Classes classification;](#)
- [FRAS CNR2D Teams classification;](#)
- [FRAS CNRVID OPEN classification;](#)
- [FRAS CNRVID Classes classification.](#)

## 15. FINAL CHECKS

**15.1 Final scrutineering**

**RMB Inter Auto Ford**

Adress: Turzii Street 152, Cluj-Napoca - service entry from Cometei 3-5 Street

**15.2 Protests**

**15.2.1** All the protests must be submitted in accordance with the provisions from the regulations. The crews that started the rally and did not finish, may also submit protest. Any protest is submitted, in written, at the Clerk of the Course, together with the protest fee, as specified in the federal regulations. The protests without the protest fee paid, or the verbal ones, will not be taken into consideration. Only the licensed crew or their representative team member registered in this respect at FIA / [FRAS](#) has the right to protest.



**15.3** The international protest fee (ASN-ACR FIA) is in amount of 500 euro. If the protest requires the dismantling and the reassembly of different parts of the car, the claimant must pay an additional deposit which will be settled by the Stewards of the Meeting, upon proposal of Scrutineers. Appeal at Stewards decision to ASN-ACR Appeal Commission Fax +40 21 222 4123, email: [cnak@acr.ro](mailto:cnak@acr.ro) 1.000 euro payment into ACR account in 48 h starting with time of appeal submission.

**15.4** FRAS protest fees are the following:

- Sporting protest - 240 euro;
- Technical protest for a specific part of the car - 600 euro;
- Technical protest for a subassembly - 1200 euro;
- Technical protest for entire car – 3500 euro.

**15.5** The protests against the results or classification shall be submitted within max 30 minutes after the results appear on the official notice board.

**15.6** Against the decisions taken by the Stewards panel, the one considering itself wronged may submit litigation to FIA / [FRAS](#).

- The intention of submitting an appeal must be notified to the COC, in written form, in maximum one hour after the contested decision is published.
- Absence of this notification or the submitting after the regular deadline, incurs the decline to the right of litigation or appeal.

**15.7** The appeal must be submitted at ASN / [FRAS](#) headquarter, in maximum 48 hours after receiving the notification from COC. It is accepted the appeal to be sent on e-mail, fax, etc. together with a copy of the payment order, the one calculated in the regulations in force.

**15.8 Fees and deposits:**

- National appeal: ASN – ACR Appeal Commission ([cnak@acr.ro](mailto:cnak@acr.ro)) – 1.000 euro
- International appeal: FIA – deposit – 6.000 euro

**15.9 Fees for litigations / FRAS appeals:**

- For protests at Competitions Committee – 450 euro;
- For protest at Discipline Committee – 450 euro;
- For appeals at Appeal Committee - 600 euro.



## Appendix I - ITINERARY

### Ceremonial Start

Thursday, 3 May 2018

TC	Location	SS dist.	Liaison dist.	Total dist.	Target time	First car due
	Cluj Arena					20:00

Sunrise:	06:08
Sunset:	20:37

### Shakedown

Friday, 4 May 2018

TC	Location	SS dist.	Liaison dist.	Total dist.	Target time	First car due
SD	Shakedown - Florești	2,85			09:00 - 14:00	
SD	Shakedown - Florești (TER, CNRD - Cl. 2, 3, 4, 5, 11)	2,85			11:30 - 14:00	
	(CNRD - Rest of classes, CNRVID)					

### Start (Sections 1 & 2)

Friday, 4 May 2018

TC	Location	SS dist.	Liaison dist.	Total dist.	Target time	First car due
0	START - Service park Sports Hall Cluj-Napoca					16:00
RZ	Refuel - Sports Hall					16:40
1	Distance to next refuel	(34,75)	(59,62)	(94,37)	00:40	16:43
SS1	Căpușu Mare	21,30	31,25	52,55	01:03	17:46
2	Răchitea	13,45				17:49
RZ	Remote fuel - Belis		(3,58)			18:39
2	Distance to next refuel	(24,97)	(42,05)	(67,02)	00:50	18:42
3	Mărișel	24,97	22,68	47,65	01:00	19:42
SS3	Tarnita				00:15	19:57
3A	Regroup & Technical Zone A IN - Sports Hall					20:42
3B	Regroup A OUT - Service IN	(59,72)	(101,67)	(161,39)	00:45	
3C	Service OUT					
RZ	Refuel - Sports Hall					
3	Distance to next refuel	(7,15)	(17,05)	(24,20)	00:38	21:20
4	Florești	7,15	11,65	11,65	00:30	21:23
SS4	Florești 1		4,30	11,45		21:53
4A	Finish LEG 1- Park ferme IN Polyvalent Hall					
FRIDAY TOTALS		66,87	117,62	184,49		

Sunrise:	06:06
Sunset:	20:39

v.1 Itinerary Transilvania Rally 2018 (March 2018)



## Restart (Sections 3, 4, 5 & 6)

Saturday, 5 May 2018

TC	Location	SS dist.	Liaison dist.	Total dist.	Target time	First car due
4B	Start LEG 2 - Park ferme Polyvalent Hall					07:30
4C	Service IN		1,10	1,10	00:05	07:35
4D	<b>SERVICE B (Sports Hall)</b>				<b>00:20</b>	
RZ	Service OUT					07:55
4	<b>Refuel - Sports Hall</b>					
5	Distance to next refuel	(9,65)	(55,70)	(65,35)		
SS5	Mănăstireni	9,65	48,00	48,00	01:00	08:55
RZ	<b>Remote refuel - Beliş</b>					<b>08:58</b>
5	Distance to next refuel	(13,45)	(7,70)	(21,15)		
6	Răchitea	13,45	43,90	57,35	01:03	10:01
SS6	Belis 2	13,45	43,90	57,35	01:03	10:04
RZ	<b>Remote refuel - Beliş</b>					
6	Distance to next refuel	(27,90)	(3,58)	(31,48)		
7	Mănăstireni	8,75	31,65	40,40	01:00	11:04
SS7	Mănăstireni 1	8,75	31,65	40,40	01:00	11:07
8	Dângău	12,00	0,95	12,95	00:15	11:22
SS8	Dângău 1	12,00	0,95	12,95	00:15	11:25
9	Florești	7,15	18,55	25,70	00:40	12:05
SS9	Florești 2	7,15	18,55	25,70	00:40	12:08
9A	Regroup & Technical Zone B IN - Sports Hall		4,55	11,70	00:21	12:29
9B	Regroup B OUT - Service IN				01:00	13:29
9C	<b>SERVICE C (Sports Hall)</b>				<b>00:30</b>	
RZ	Service OUT					13:59
7	<b>Refuel - Sports Hall</b>					
10	Distance to next refuel	(16,80)	(66,70)	(83,50)		
SS10	Florești 3	7,15	11,65	18,80	00:25	14:24
10A	Regroup & Technical Zone C IN - Sun		2,85	10,00	00:15	14:42
10B	Regroup C OUT				00:10	14:52
11	Mănăstireni	9,65	44,50	54,15	00:55	15:47
SS11	Valea Fericii 2	9,65	44,50	54,15	00:55	15:50
RZ	<b>Remote refuel - Beliş</b>					
8	Distance to next refuel	(20,75)	(7,70)	(28,45)		
12	Mănăstireni	8,75	32,65	41,40	00:50	16:40
SS12	Mănăstireni 2	8,75	32,65	41,40	00:50	16:43
13	Dângău	12,00	0,95	12,95	00:15	16:58
SS13	Dângău 2 (Power Stage)	12,00	0,95	12,95	00:15	17:01
13A	Regroup & Technical Zone D IN - Sala Sporturilor		23,15	35,15	00:45	17:46
13B	Regroup D OUT - Service IN				00:10	17:56
13C	<b>SERVICE D (Sports Hall)</b>				<b>00:30</b>	
RZ	Service OUT					18:26
9	<b>Refuel - Sports Hall</b>					
14	Distance to next refuel	(2,60)	(1,65)	(4,25)		
SS14	Cluj Napoca	2,60	1,45	4,05	00:08	18:34
SS15	SS Cluj Arena	2,60	1,45	4,05	00:08	18:37
14A	Rally finish - Park ferme IN Polyvalent Hall		0,20	2,80	00:06	18:43
<b>SATURDAY Totals</b>		<b>91,15</b>	<b>266,10</b>	<b>357,25</b>		

<b>Sunrise:</b>	<b>06:04</b>
<b>Sunset:</b>	<b>20:40</b>

	PS No.	SS dist.	Liaison dist.	Total	% of SS
Friday (Sections 1 & 2)	4	66,87	117,62	184,49	36,25%
Saturday (Sections 3, 4, 5 & 6)	10	91,15	266,10	357,25	25,51%
<b>Totals</b>	<b>14</b>	<b>158,02</b>	<b>383,72</b>	<b>541,74</b>	<b>29,17%</b>

v.1 Itinerary Transilvania Rally 2018 (March 2018)



## Appendix II - RECONNAISSANCE SCHEDULE

Day / Date	Time allowed	Special Stage	Reconnaissance allowed
Wednesday, 2 May 2018	08:00 / 12:30	Căpușu Mare	TER / CNRD / CNRVID
	08:00 / 11:00	Florești	
	08:00 / 19:00	Beliș	
		Tarnița *	
		Valea Fericii	
	13:00 / 19:00	Mănăstireni	
		Dângău	
Thursday, 3 May 2018	08:00 / 09:30	Shakedown	TER / CNRD / CNRVID / CNR2D
	08:00 / 12:00	Căpușu Mare	
	09:30 / 11:00	Florești	
	08:00 / 17:30	Beliș	
		Tarnița *	
		Valea Fericii	
	12:30 / 17:30	Mănăstireni	
		Dângău	
	22:45 / 00:00	SS Cluj Arena **	

*\* Subject to strict adherence to the rules imposed by the Road Code and strict GPS tracking, it is approved to return to the same route sector at the start of the Tarnița Special Probe for the second pass of reconnaissance.*

*\*\* Thursday, 3 May 2018, at 22:45 - 00:00, reconnaissance SS Cluj Arena will be made with closed road and will be made with reconnaissance car.*

**Important: Except Special Stage Tarnița, is strictly forbidden on the special stage return!**

**Note: Speed limits of during the entire reconnaissance session, the competitors must comply with rules and regulations of Romanian Road Code and legislation in force, and on the special stages not to exceed the speed of 70 km/h, in areas where no other speed limit are signaled by signposts. A tolerance of 10 km/h is allowed.**



## Appendix III - COMPETITOR'S RELATION OFFICER



**Judith FERENCZ**  
+40.730.555.839

**Speaks:**

- Romanian
- Hungarian
- English



**Csaba FERENCZ**  
+40.744.221.011

**Speaks:**

- Romanian
- Hungarian
- English

Date	Hour	Location
Tuesday 1 May 2018	18:00 - 22:00	Rally HQ
Wednesday 2 May 2018	08:00 - 22:00	Rally HQ
Thursday 3 May 2018	08:00 - 14:00	Rally HQ
	14:00 - 18:30	Scrutineering
Friday 4 May 2018	09:00 - 15:00	Shakedown
	16:00 - 22:30	Service Park and Regroup
Saturday 5 May 2018	07:30 - 21:00	Service Park and Regroup

## Appendix IV - COMPETITION NUMBER AND ADVERTISING

### 1) Front door:

2 panels 67 cm wide by 17 cm high including a 1 cm white surround, competition number box which shall always be at the front of the panel. The top of the plate shall be between 7 cm and 10 cm below the lower limit of the window.



### 2) Side windows:

2 numbers for each rear side window which shall be 20 cm high with a stroke width of at least 25 mm, coloured fluorescent orange (PMS 804), and may be reflective. These numbers shall be placed on the rear side windows adjacent to the crew's name.

### 3) Front plate:

One plate fitting into a rectangle 43 cm wide by 21.5 cm high which shall include at least the competition number and full name of the rally.

### 4) Rear window:

One rear window panel measuring a maximum of 30 cm wide and 10 cm high shall be positioned at the top of the rear window, and positioned left or right as indicated in the supplementary regulations. An

adjacent area of 15 cm x 15 cm shall contain a fluorescent orange (PMS 804) 14 cm high competition number on a clear background. This number may be reflective and must be visible from the rear at eye level.

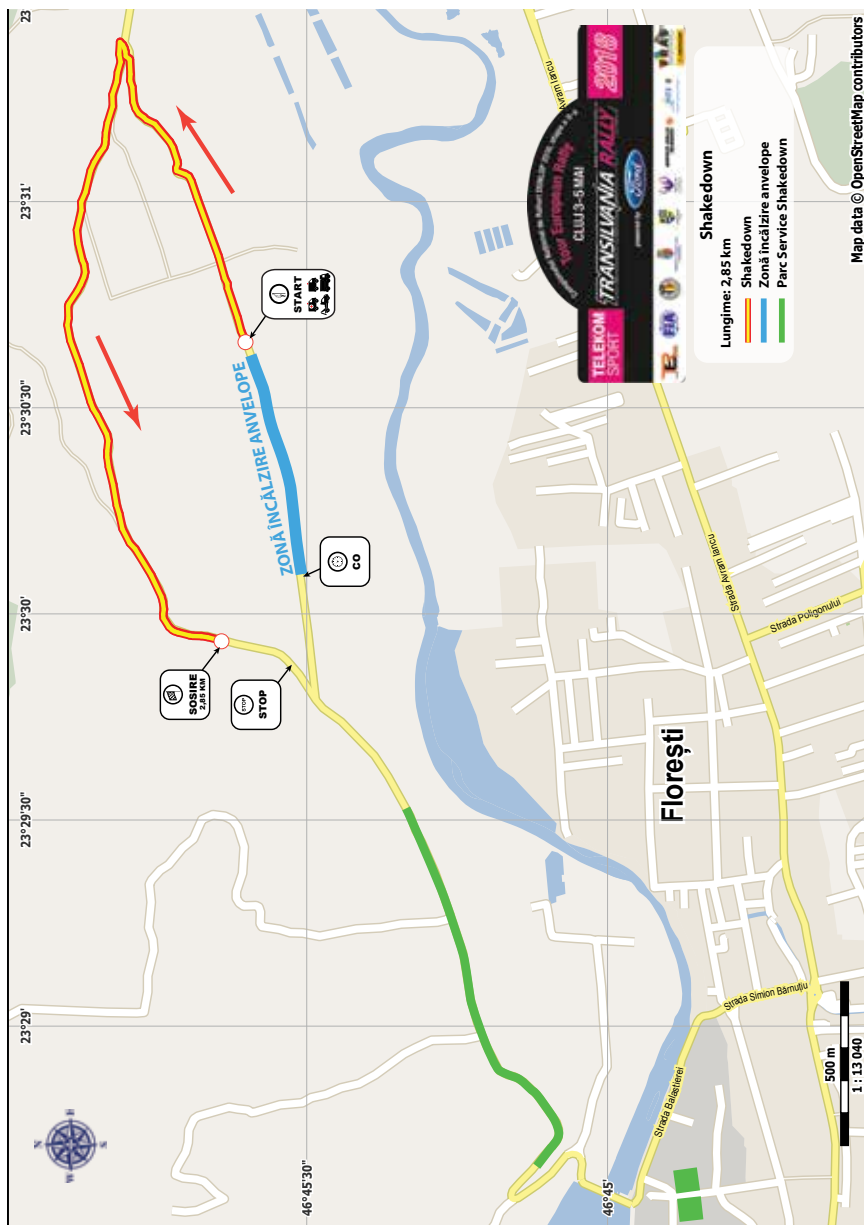
### 5) Roof panel:

One roof panel, 50 cm wide by 52 cm high, to be placed on the roof with the top towards the front of the car. A matt black competition number, 5 cm wide by 28 cm high, will be displayed on a matt white background 50 cm wide by 38 cm high.





## Appendix V - SHAKEDOWN MAP





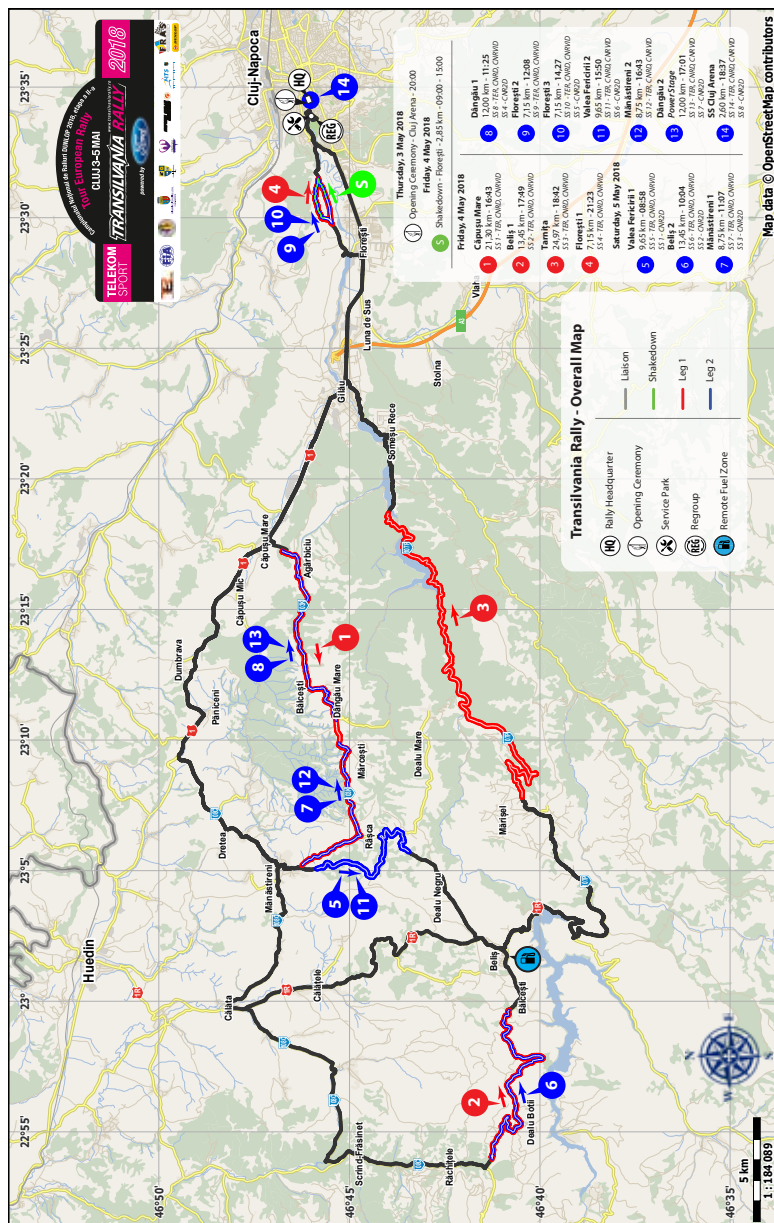


## Appendix VI - SSS CLUJ-ARENA MAP





## Appendix VII - OVERALL MAP





## Appendix VIII - SHAKEDOWN DISCLAIMER

### To Clerk of the Course Telekom Sport Transilvania Rally 2018 powered by FORD

#### DRIVER DISCLAIMER

(Name) ..... born on date .....  
in city ....., currently living in county .....,  
city....., str. ...., no. ...., Bloc ....., Scara .....,  
floor ....., Ap. ...., ID ....., no. ...., issued by ....., at date of  
....., with personal identity number ....., license  
no. .... driver of FIA / FRAS, I am requesting the approval for my participation together  
with my guest at Shakedown Mr./Mrs. ....

Knowing the provision regarding the false declarations from Criminal Code, I take  
the full responsibility, juridical and financial, regarding the actions, taxes, expenses,  
inconvenient and damages produced to third party.

Driver .....(First Name-Surname) Signature.....

#### GUEST DISCLAIMER

The undersigned (Name) \_\_\_\_\_, ID No. /  
Passport nr. \_\_\_\_\_, declares that accepts full responsibility for any  
accident that may occur during Shakedown, and waives the Organizers of Transilvania  
Rally, Motorhome Napoca Rally Team and FIA / FRAS, as well the driver of any  
consequence that may result from any incident or accident.

Guest .....(First Name-Surname) Signature.....

Attached: *Copy if ID card or Passport*